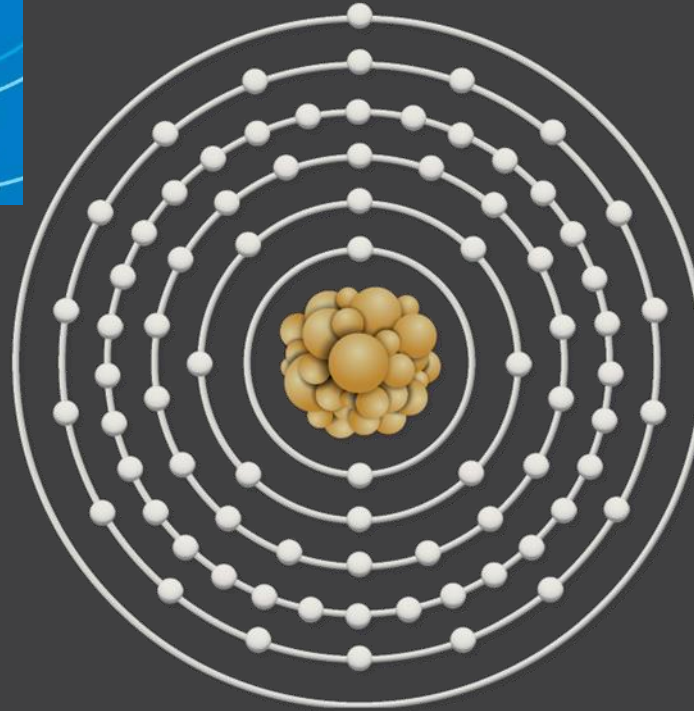




Global Metals, Mining
& Critical Minerals
Conference | 2024

MINING FOR A FUTURE

INVESTOR PRESENTATION



Au

Gold
196.97
p: 79
n: 118

DISCLAIMER AND FORWARD LOOKING STATEMENTS

The name 'Presenter' refers to Pan African Resources PLC and its advisors, subsidiaries or affiliated companies.

This presentation has not been filed, lodged, registered or approved in any jurisdiction and recipients of this document should keep themselves informed of and comply with and observe all applicable legal and regulatory requirements.

Statements or assumptions in this presentation as to future matters may prove to be incorrect. The Presenter makes no representation or warranty as to the accuracy of such statements or assumptions. Circumstances may change and the contents of this presentation may become outdated as a result, and the Presenter has no obligation to update the presentation or correct any inaccuracies or omissions in this presentation.

This presentation may not be reproduced in whole or in part, nor may any of its contents be divulged to any third party without the prior consent in writing of the Presenter.

The recipient acknowledges that neither it nor the Presenter intends that the Presenter act or be responsible as a fiduciary to the recipient, its management, stockholders, creditors or any other person. Each of the recipient and the Presenter, by accepting and providing this presentation respectively, expressly disclaims any fiduciary relationship and agrees that the recipient is responsible for making its own independent judgments with respect to any transaction and any other matters regarding this presentation.

Furthermore, the information contained in this presentation may also qualify as "inside information" as defined in the Financial Markets Act (Act No. 19 of 2012) ('FMA'). In terms of the FMA it is a criminal offence for a person who knows that he or she has inside information to:

- deal directly or indirectly or through an agent for his or her own account, or for the account of another person, in listed securities to which the inside information relates;
- disclose the inside information to another other than in the proper course of a person's employment, profession or duties; and
- encourage or cause another person to deal or discourage or stop another person from dealing in the listed securities to which the inside information relates.

The Presenter shall not have any liability for any loss suffered due to reliance being placed on this presentation the information contained herein or the oral presentations referred to. This presentation is for informational purposes only and is not intended to provide legal, tax, financial, investment or other advice. You must make your own examination of the tax, legal, financial and other consequences of this proposal and you should not treat the contents of this presentation as advice in relation to any such matters. If you are in any doubt as to what action you should take, you are recommended to seek your own advice from your stockbroker, bank manager, solicitor, accountant, fund manager or other appropriate independent financial adviser duly authorised under the Financial Services and Markets Act 2000 and who is qualified and experienced to advise on such matters if you are in the UK, or from another appropriately authorised independent financial adviser if you are in a territory outside the UK.

Furthermore, the information contained in this presentation may also qualify as "inside information" as defined in the Market Abuse Regulation ("MAR"). It is a breach of MAR where a person possesses inside information and:

- uses that information by acquiring or disposing of, for its own account or for the account of a third party, directly or indirectly, financial instruments to which that information relates; or
- discloses that information to any other person, except where the disclosure is made in the normal exercise of an employment, a profession or duties.

This presentation is for information purposes only and does not constitute an offer or invitation to subscribe for or purchase any securities, and neither this presentation nor anything contained therein nor the fact of its distribution shall form the basis or be relied on in connection with or act as any inducement to enter into any contract or commitment whatsoever.

Some or all of the information contained in these slides and this presentation (and any other information which may be provided) may be inside information relating to the securities of the Presenter within the meaning of the Criminal Justice Act 1993 and the Market Abuse Regulation (EU/596/2014) ("MAR"). Recipients of this information shall not disclose any of this information to another person or use this information or any other information to deal, or to recommend or induce another person to deal in the securities of the Presenter (or attempt to do so). Recipients of this information shall ensure that they comply or any person to whom they disclose any of this information complies with this paragraph and also with MAR. The term "deal" is to be construed in accordance with the Criminal Justice Act 1993 and with MAR. Recipients of these slides and the presentation should not therefore deal in any way in ordinary shares in the capital of the Presenter ("Ordinary Shares") until the date of a formal announcement by the Presenter in connection with the preliminary results of the Presenter for the six months ended 31 December 2023. Dealing in Ordinary Shares in advance of this date may result in civil and/or criminal liability.

Statements in this presentation that address exploration activities, mining potential and future plans and objectives of Pan African Resources are forward-looking statements and forward-looking information that involve various risks, assumptions and uncertainties and are not statements of fact.

The directors and management of Pan African Resources believe that the expectations expressed in such forward-looking statements or forward-looking information are based on reasonable assumptions, expectations, estimates and projections. However, these statements should not be construed as being guarantees or warranties (whether expressed or implied) of future performance.

There can be no assurance that such statements will prove to be accurate and actual values, results and future events could differ materially from those anticipated in these statements. Important factors that could cause actual results to differ materially from statements expressed in this presentation include among others, the actual results of exploration activities, technical analysis, the lack of availability to Pan African Resources of necessary capital on acceptable terms, general economic, business and financial market conditions, political risks, industry trends, competition, changes in government regulations, delays in obtaining governmental approvals, interest rate fluctuations, currency fluctuations, changes in business strategy or development plans and other risks.

Although Pan African Resources has attempted to identify important factors that could cause actual results to differ materially, there may be other factors that cause results not to be as anticipated, estimated or intended. Pan African Resources is not obliged to publicly update any forward-looking statements included in this presentation, or revise any changes in events, conditions or circumstances on which any such statements are based, occurring after the publication date of this presentation, other than as required by regulation.

OVERVIEW OF PRESENTATION

Health and safety

Group overview

Our operating environment

H1 FY2024 – Key features

Performance by operation

Group AISC

Capital projects (ZAR)

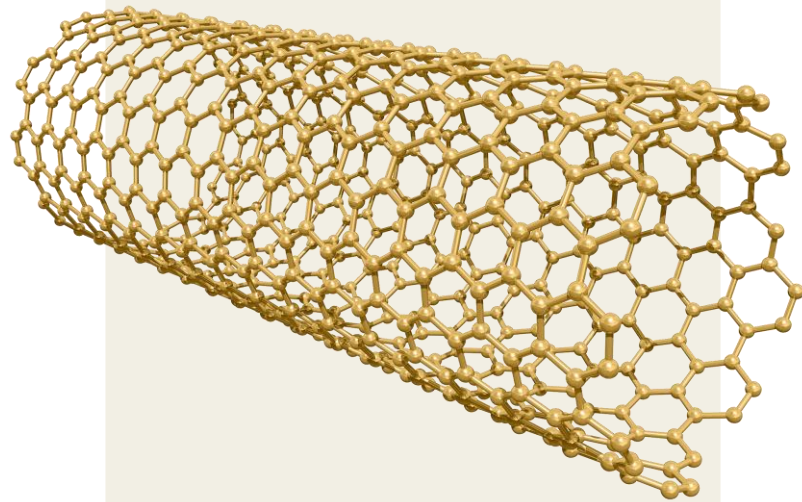
ESG: Our “Beyond compliance” approach

Financials

Exploration – Republic of the Sudan

FY2024 – Focused on execution

Appendix



1. **Health and safety**
2. **Group overview**
 - 2.1 **Our operating environment**
 - 2.2 **H1 FY2024 – Key features**
 - 2.3 **Performance by operation**
 - 2.4 **Group AISC**
 - 2.5 **Capital projects (ZAR)**
3. **ESG: Our “Beyond compliance” approach**
4. **H1 FY2024 Financials**
5. **Exploration – Republic of the Sudan**
6. **FY2024 – Focused on execution**
7. **Appendix**

HEALTH AND SAFETY

HEALTH AND SAFETY

GROUP SAFETY PERFORMANCE

Group TRIFR improved by 39.3% to 6.13 (H1 FY23: 8.54) per million-man hours

- LTIFR remained stable at 2.54 (H1 FY23: 2.54) per million-man hours
- RIFR improved to 1.04 (H1 FY23: 1.34) per million-man hours

The Group is on track for a cumulative 24% TRIFR reduction targeted by June 2029

- Safety performance remains sector leading in the SA gold mining industry

Increased focus on employee health and wellness, including outside of the work environment

Excellent operational safety performance

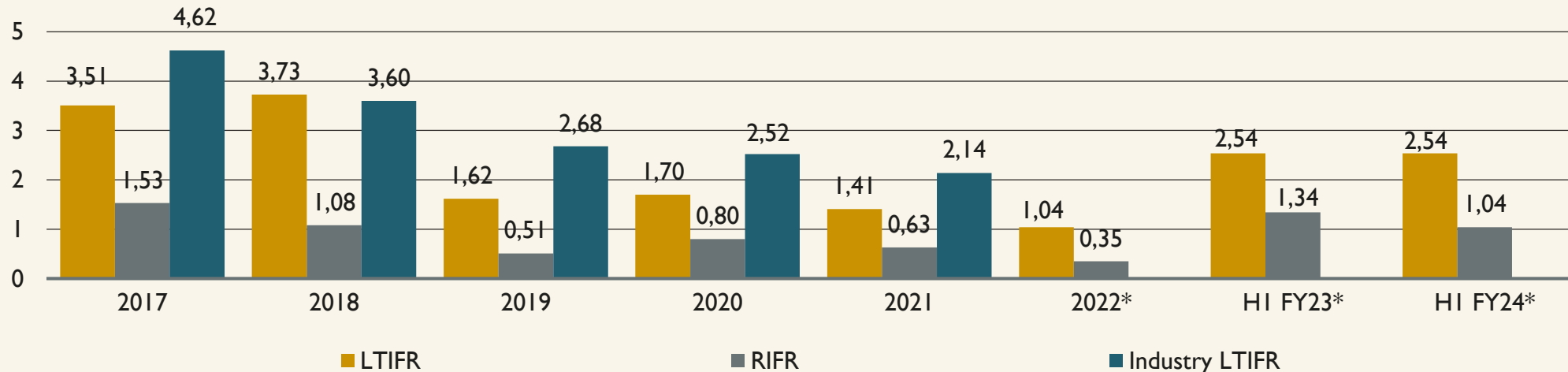
Evander Mines' underground operations LTIFR and RIFR improved to 3.71 (H1FY23: 4.72) and 0.82 (H1 FY23: 3.76) per million-man hours, respectively

Barberton Mines achieved a LTIFR of 2.57 (H1 FY23: 188) and a RIFR of 1.29 (H1 FY23: 0.63) per million-man hours

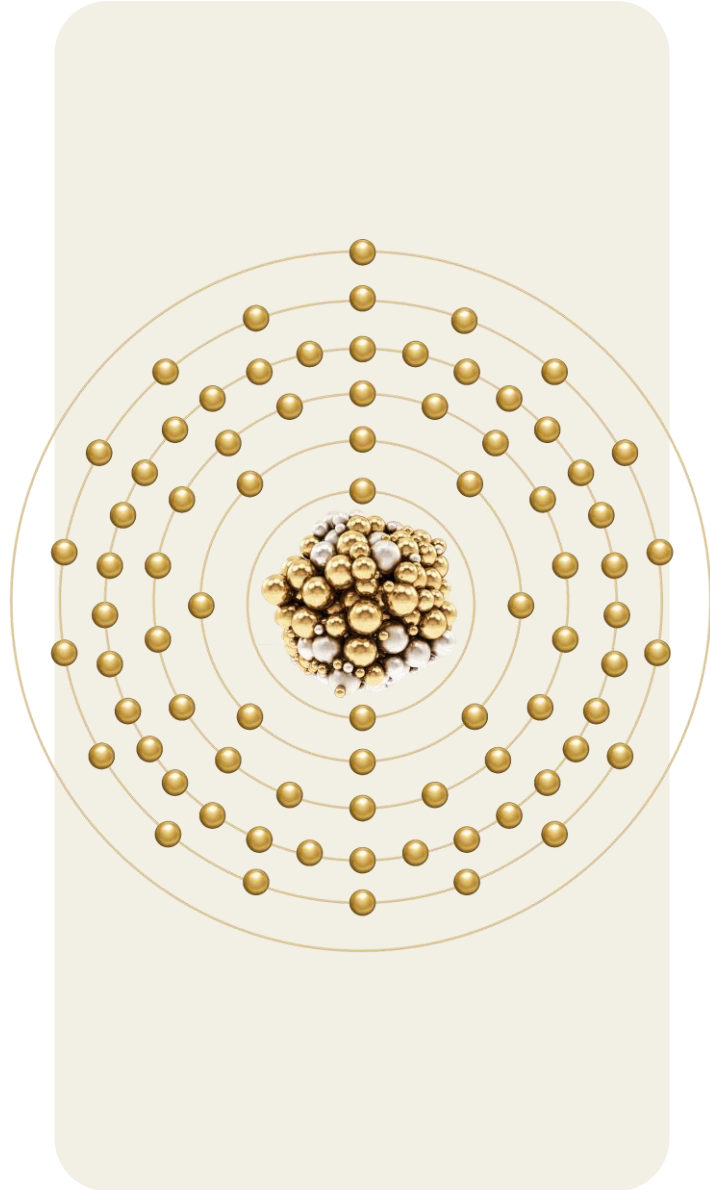
Fatality-free shift milestones achieved:

- 4 million fatality-free shifts at Barberton underground and BTRP operations as at December 2023, and 4 years without a fatality

Striving to improve our safety performance in pursuit of a 'zero harm' working environment



*2022 and 2023 Industry rates not yet available



1. Health and safety
2. **Group overview**
 - 2.1 Our operating environment
 - 2.2 H1 FY2024 – Key features
 - 2.3 Performance by operation
 - 2.4 Group AISC
 - 2.5 Capital projects (ZAR)
3. ESG: Our “Beyond compliance” approach
4. H1 FY2024 Financials
5. Exploration – Republic of the Sudan
6. FY2024 – Focused on execution
7. Appendix

GROUP OVERVIEW

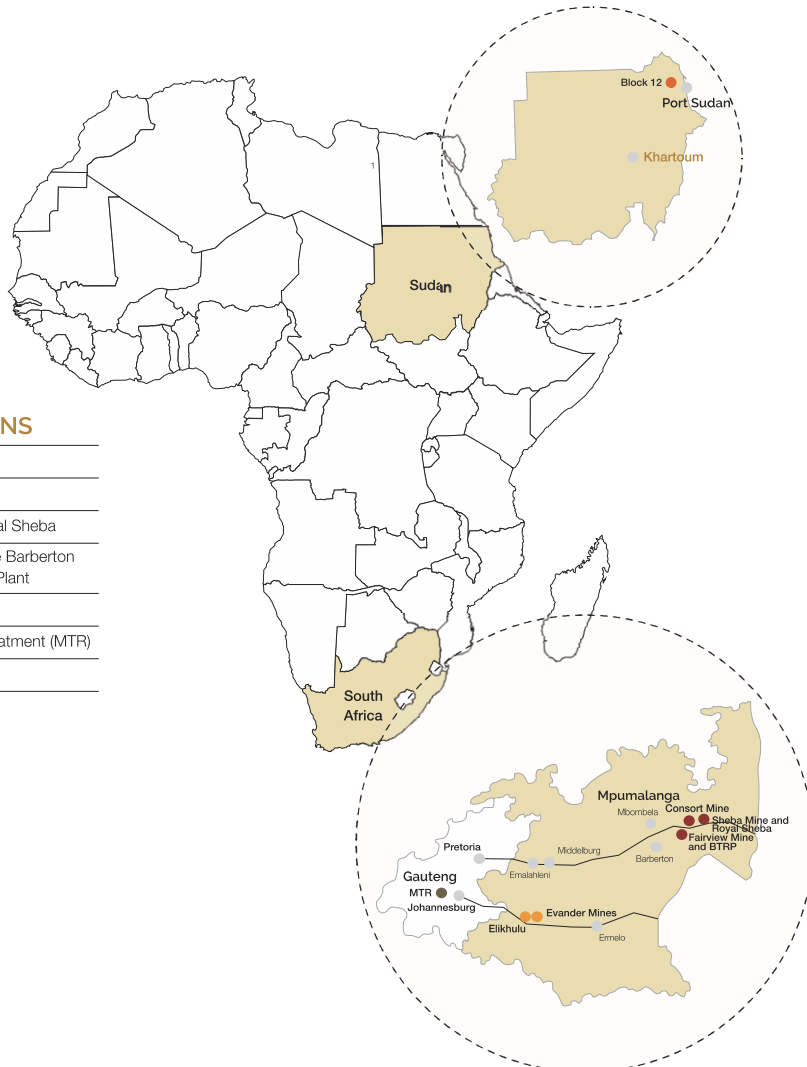


GROUP OVERVIEW

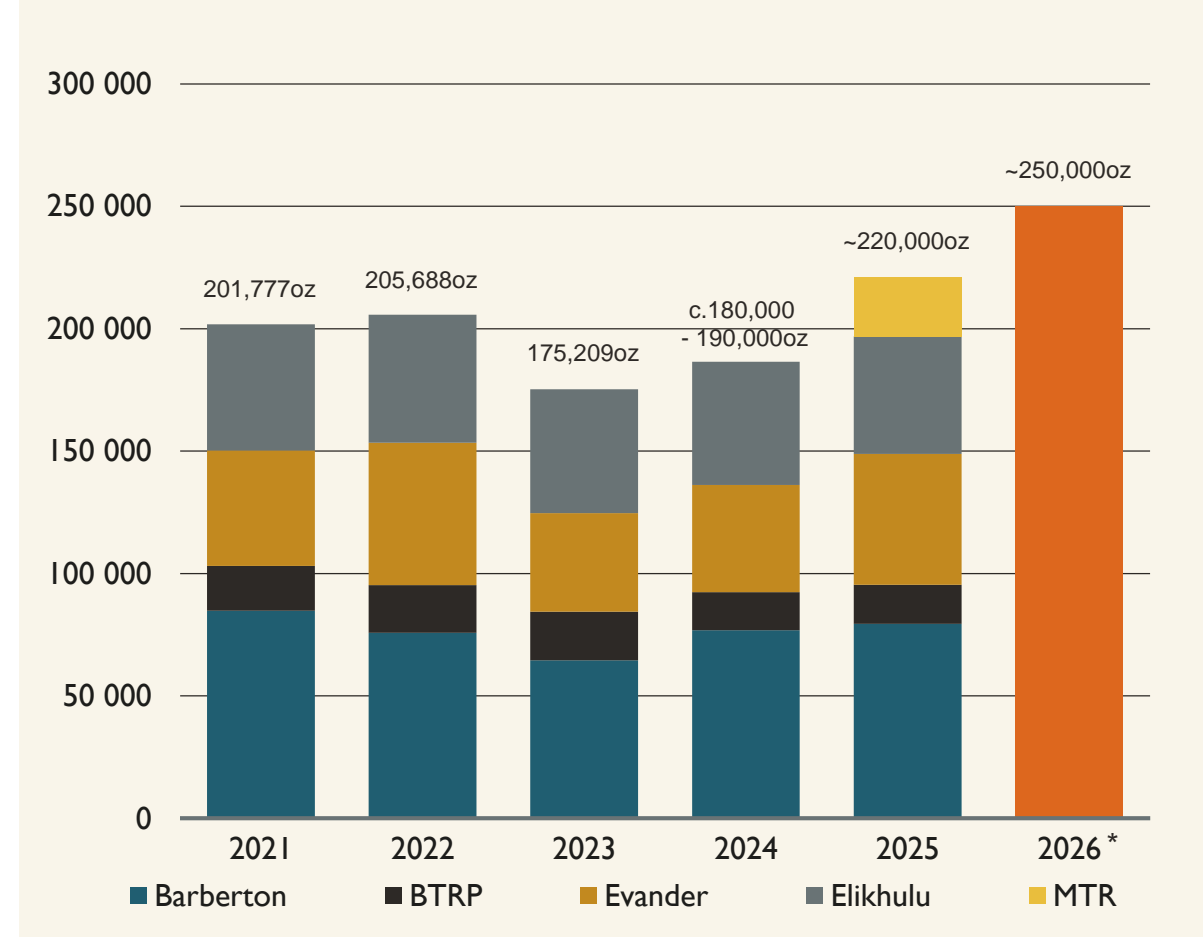
A UNIQUE COMBINATION OF UNDERGROUND AND SURFACE MINING OPERATIONS

OUR OPERATIONS

- Evander Mines
- Elikhulu
- Sheba Mine and Royal Sheba
- Fairview Mine and the Barberton Tailings Retreatment Plant
- Consort Mine
- Mogale Tailings Retreatment (MTR)
- Block 12 – Sudan



PAR Group gold production profile



*2026 annual gold production expected to increase again, with full year of production from MTR, and Evander 25-26 Level operations ramping up

GROUP OVERVIEW

H1 FY2024 GOLD PRODUCTION ▲ 6.7% TO 98,458oz (H1 FY2023: 92,307oz)

Moving towards a balanced mix of low-cost surface mining and high-grade, long-life u/g mines

35% - 45% SURFACE

MTR + Soweto Cluster
Ann Prod: 50-60koz
AISC: US\$914/oz
LOM: 20yrs

Elikhulu
Ann Prod: 50-55koz
AISC: US\$979/oz
LOM: 10yrs

BTRP
Ann Prod: 15-18koz
AISC: US\$650/oz
LOM: 2yrs + Sheba Fault Project

**FY25-FY26 estimated production
220koz-250koz/year**

**Building a world class portfolio
of long-life assets**

65% - 55% U/G

Evander Mines
Ann Prod: 55-65koz
AISC: US\$1,228/oz
LOM: 13 yrs + 9 yrs (Egoli)

Barberton Mines
Ann Prod: 75-80koz
AISC: US\$1,682/oz
LOM: 20 yrs

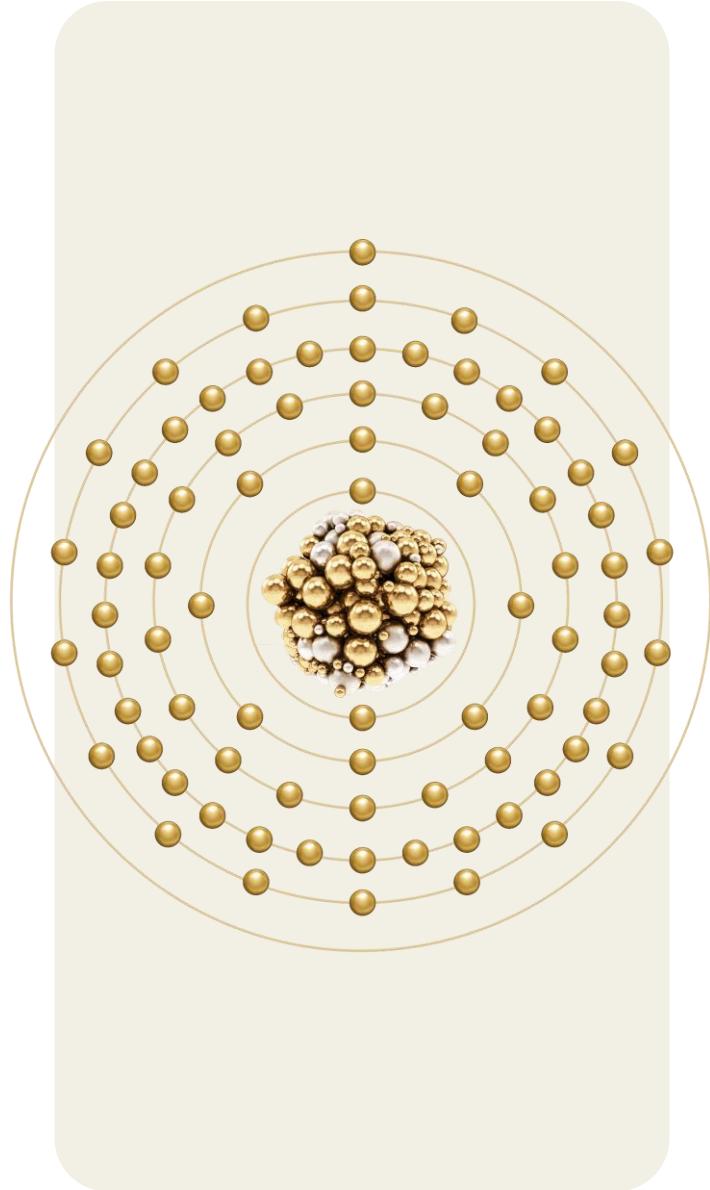


Low-cost surface tailings – environmental clean-up and rehabilitation benefits



High grade, long-life underground mines





1. Health and safety
2. Group overview
 - 2.1 **Our operating environment**
 - 2.2 H1 FY2024 – Key features
 - 2.3 Performance by operation
 - 2.4 Group AISC
 - 2.5 Capital projects (ZAR)
3. ESG: Our “Beyond compliance” approach
4. H1 FY2024 Financials
5. Exploration – Republic of the Sudan
6. FY2024 – Focused on execution
7. Appendix

GROUP OVERVIEW



OUR OPERATING ENVIRONMENT

140 YEAR TRACK RECORD OF OPERATING SUCCESSFULLY IN SOUTH AFRICA



ELECTRICITY AND SA REGULATORY FRAMEWORK

- National grid power to Group mining sites – now being supplemented with private renewable energy developments
 - Large scale solar and wind farms – both on-site and wheeled
 - Exploring storage solutions
- New renewable energy generation projects fast-tracked by government to curb blackouts
- Group is targeting at least 30MW of installed solar capacity in the next 24 months, significant cost savings already realised
- Group mining rights secure
 - Evander Mines' mining rights valid to 2038
 - Barberton Mines' mining rights valid to 2051
 - Mintails mining rights to 2029*
- Well established legal and taxation regime



STAKEHOLDER ENGAGEMENT

- Multi-faceted engagements with all stakeholders
 - Including with communities surrounding our operations
- Constructive relationships with employees and representative unions
 - No history of prolonged strike action
 - Multi-year wage agreements in place
 - 1 year remaining at Barberton Mines
 - 3 years at Evander contractor operations
- Focus on 'beyond compliance' initiatives to maintain social licence to operate and strengthen community relations
- Lifestyle diseases: awareness, prevention and treatment programmes in place, as well as wellness programs at operations
- Smartphone learning management app rollout at operations – enhanced employee education, interaction and communication



SECURITY AND PUBLIC/PRIVATE COLLABORATION

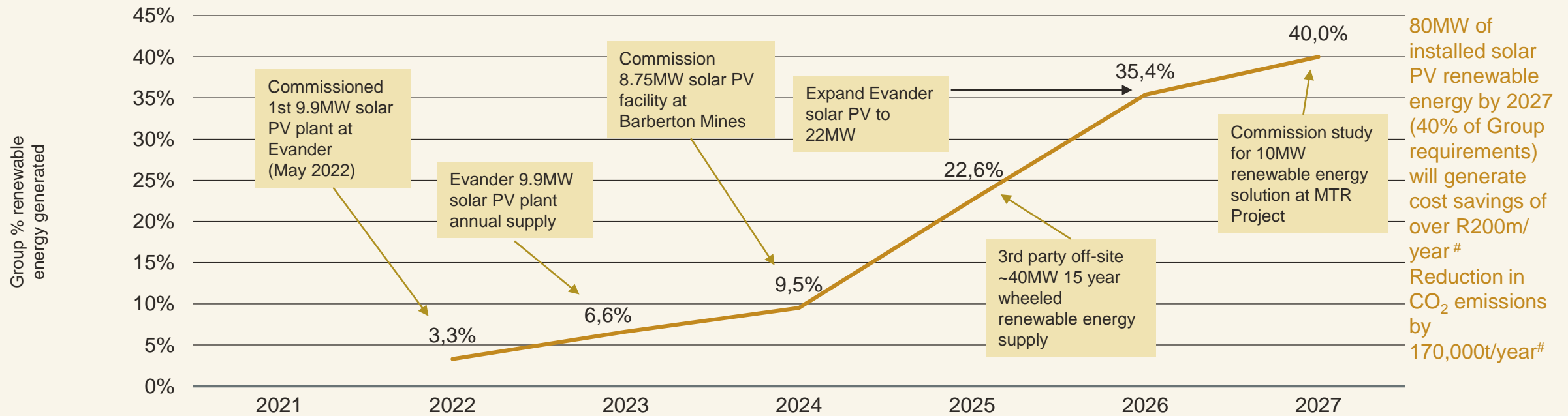
- Increasing collaboration between private sector businesses and the State to resolve issues
 - Illegal mining/criminality
 - Corruption
 - Electricity and infrastructure
- Stringent physical and cybersecurity measures in place – modernisation of security technology ongoing
- Collaboration with government and peer companies to combat illegal mining and criminality at all sites
 - Meaningful and regular interventions by authorities – reduction observed in criminal activity
- Member of the Global Initiative against Transnational Organised Crime (GITOC)

*Application for extension for the LOM can be submitted 1 year prior to expiry of current mining rights

OUR OPERATING ENVIRONMENT

OPERATING SUCCESSFULLY IN SOUTH AFRICA – RENEWABLE ENERGY ROADMAP

Current pipeline of Group renewable energy projects

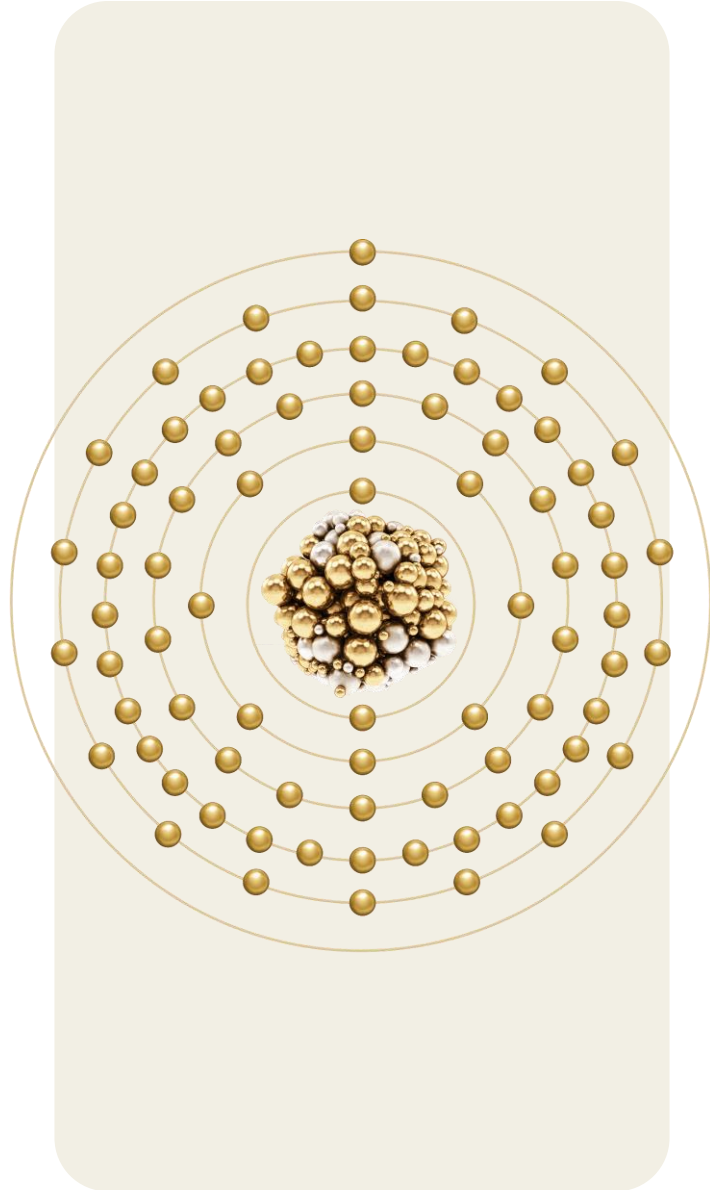


80MW of installed solar PV renewable energy by 2027 (40% of Group requirements) will generate cost savings of over R200m/year[#] Reduction in CO₂ emissions by 170,000t/year[#]

Cost Savings US\$m		0,7	1,40	1,30*			
Emissions saved tCO₂e		1 500	21 400	30 763[#]	95 765[#]	151 405[#]	172 805[#]

Actively investigating further opportunities to source renewable energy from solar, wind and battery storage solutions

* H1 FY2024 at current tariffs | # projected



1. Health and safety
2. Group overview
 - 2.1 Our operating environment
 - 2.2 **H1 FY2024 – Key features**
 - 2.3 Performance by operation
 - 2.4 Group AISC
 - 2.5 Capital projects (ZAR)
3. ESG: Our “Beyond compliance” approach
4. H1 FY2024 Financials
5. Exploration – Republic of the Sudan
6. FY2024 – Focused on execution
7. Appendix

GROUP OVERVIEW



H1 FY2024 KEY FEATURES

OPERATIONAL AND FINANCIAL PERFORMANCE



PRODUCTION PERFORMANCE

Group gold production of 98,458oz ↑ 6.7%

- Operations performed in line or better than anticipated
 - Transition to continuous operating cycle resulted in increased underground production from Fairview and Sheba Mines
 - Consort Mine – access to higher grade areas will improve H2 performance
 - Evander Mines' 24 Level – increased production and development with added crews
 - Accelerated underground exploration and development to access future production areas
- Surface assets performed exceptionally well, as metallurgical recoveries improved
- FY2024 guidance of 180,000oz to 190,000oz – may be increased during H2

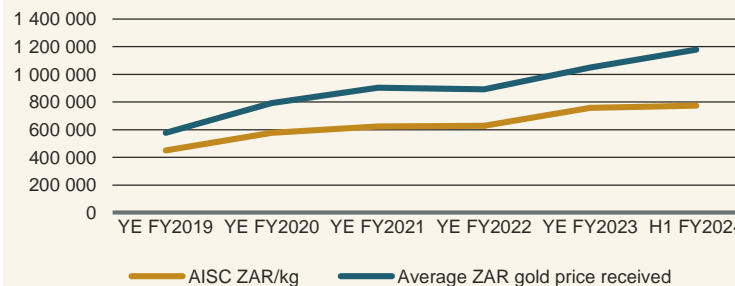


COST PERFORMANCE

Group AISC ↓ 0.3% to US\$1,287/oz (H1 FY23 US\$1,291/oz) – despite increased inflationary pressures

- >85% of Group production (BTRP, Elikhulu, Evander u/g and Fairview Mines) AISC of US\$ 1,149/oz
- Work in progress to realise full impact of remedial measures at higher-cost operations (Consort and Sheba mines)
- Cost savings from renewable energy of US\$13/oz, not included in Group AISC
- Target AISC for FY2024: guidance positively revised to between US\$1,325 and US\$1,350/oz*

Gold price received vs AISC

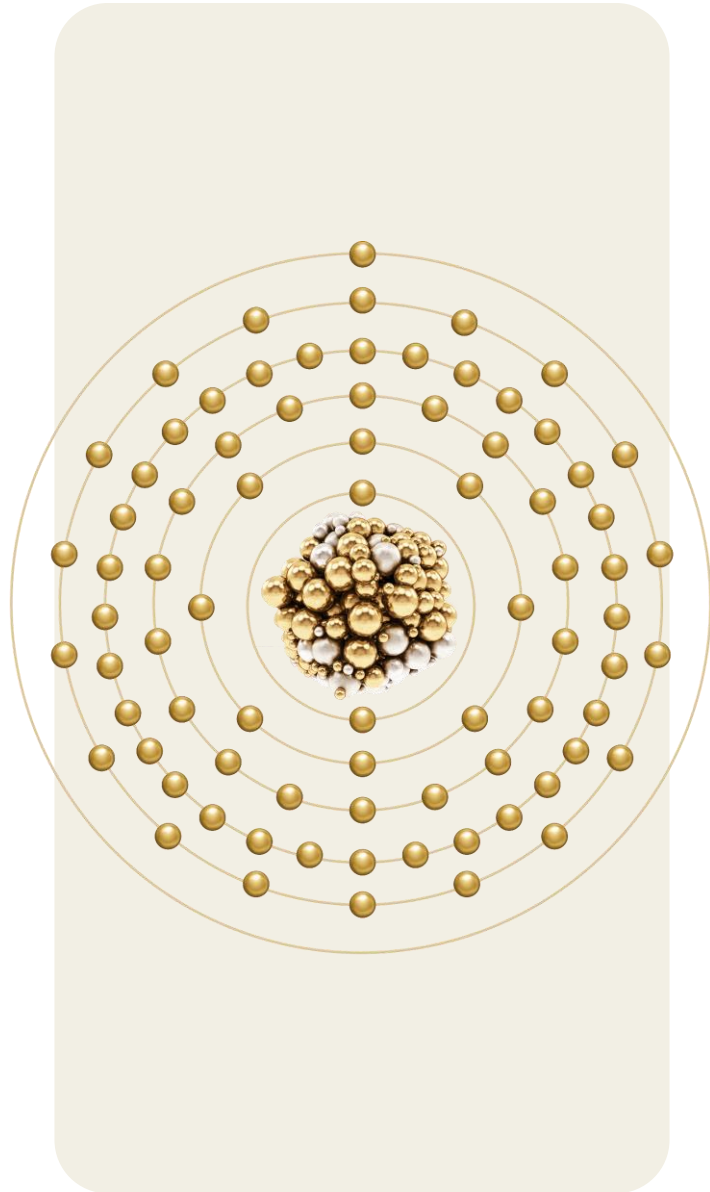


FINANCIAL PERFORMANCE

Robust performance in H1 FY24

- Profit for the period ↑ 46.7% to US\$42.4m (H1 FY23: US\$28.9m)
- Cash flows from operating activities ↑ 134.5% to US\$27.2m (H1 FY23: US\$11.6m)
- Adjusted EBITDA^{APM} ↑ 41.1% to US\$75.2m (H1 FY23: US\$53.3m)
- Strong financial position, with net debt^{APM} of US\$64.3m (H1 FY23: US\$53.7m) with increase attributable to:
 - Capex of US\$21.6m incurred on MTR Project
 - Dividend of US\$22.1m paid to shareholders in December 2023
- Liquidity remains healthy – access to cash of US\$31.3m and undrawn facilities of US\$86.4m (H1 FY23: US\$52.1m)

*Application for extension for the LOM can be submitted 1 year prior to expiry of current mining rights



1. Health and safety
2. Group overview
 - 2.1 Our operating environment
 - 2.2 H1 FY2024 – Key features
 - 2.3 Performance by operation
 - 2.4 Group AISC
 - 2.5 Capital projects (ZAR)
3. ESG: Our “Beyond compliance” approach
4. H1 FY2024 Financials
5. Exploration – Republic of the Sudan
6. FY2024 – Focused on execution
7. Appendix

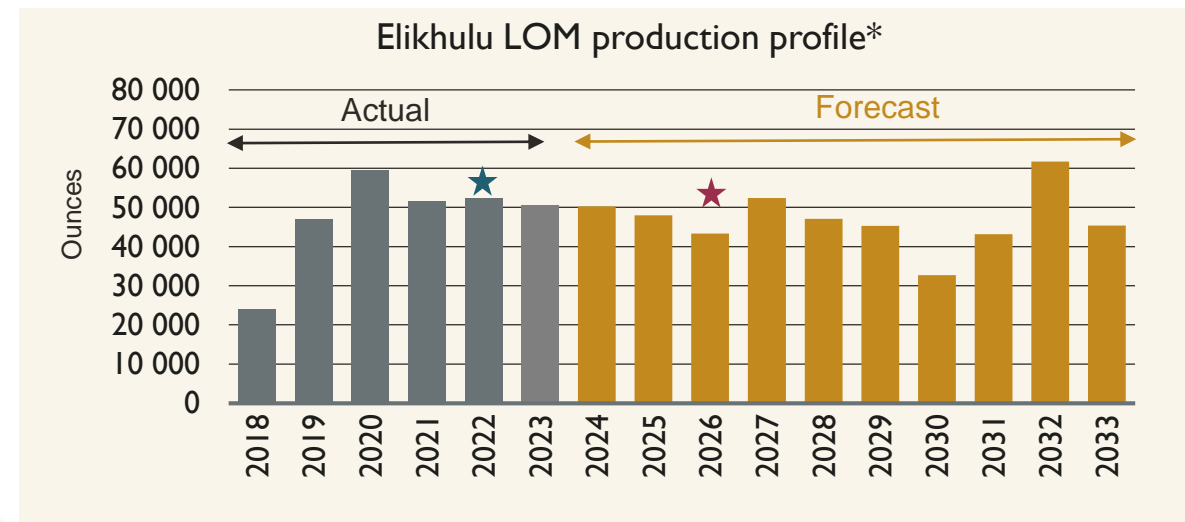
GROUP OVERVIEW



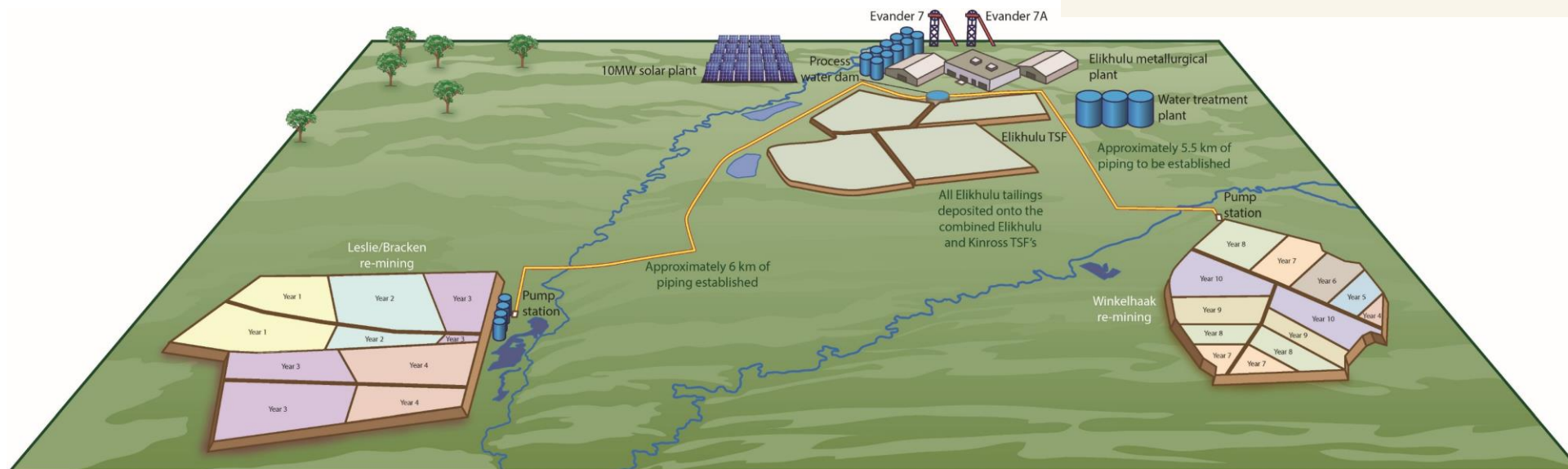
PERFORMANCE BY OPERATION

TAILINGS OPERATIONS – ELIKHULU

- Production ▲ 8.8% to 28,106oz (H1 FY23: 25,830oz)
 - Improved overall metallurgical recovery of 34.9% (H1 FY23: 32.3%)
- AISC of US\$979/oz (H1 FY23: US\$947/oz) – one of the lowest cost large producers in Southern Africa
- 10 Year LOM with consistent performance – processed 7,170Mt of tailings material (H1 FY23: 7,164Mt)
- 9.9MW solar PV renewable energy plant producing to capacity – electricity cost savings of US\$13/oz in Group AISC[#]
- Adjusted EBITDA generated: US\$29,1m (H1 FY23: US\$20,9m)
- Completed phases 2 and 3 of new TSF construction on time and budget – long-life modern storage facilities in line with GISTM standards



★ Switch to Leslie TSF
 ★ Switch to Winkelhaak TSF



* As per updated Group MRMR report | # savings not yet included in Group AISC

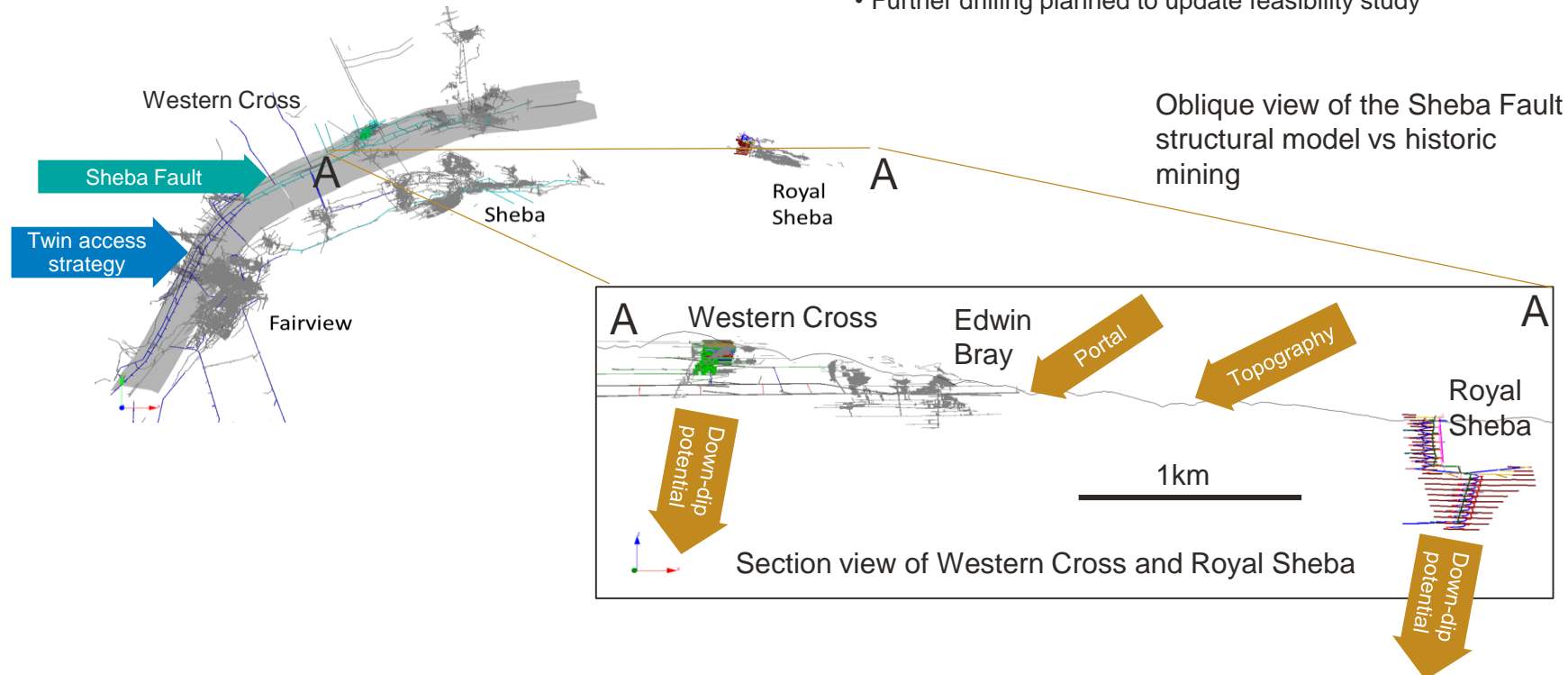
PERFORMANCE BY OPERATION

TAILINGS OPERATIONS – BTRP AND ROYAL SHEBA

- Production remained consistent at 9,864oz (H1 FY23: 10,012oz)
- Lowest cost of production in the Group
 - AISC of US\$650/oz (H1 FY23: US\$725/oz)
 - Adjusted EBITDA generated: US\$10.8m (H1 FY23: US\$6.9m)
 - Overall recoveries improved to 51.1% (H1 FY23: 48.7%)
- LOM ~2 years from current near term surface resources, feed then substituted by Sheba Fault Project

BTRP LOM extension: Sheba Fault Project

- Royal Sheba and Western Cross orebodies – orebodies open at depth, optimisation work in progress to maintain BTRP production run rate
- Royal Sheba
 - Mine design plan optimised – est. 8-year LOM producing 235,000oz gold at 3g/t
- Western Cross
 - Low grade (3-4g/t) 10m wide free-milling orebody amenable to bulk mining
 - Current access via the Southwall adit at Sheba Mine
 - Further drilling planned to update feasibility study



PERFORMANCE BY OPERATION

TAILINGS RETREATMENT OPERATIONS – MINTAILS

October 2022 – Closure of transaction to acquire total share claims and capital of Mogale Gold and Mintails SA Soweto Cluster TSFs

- Acquisition price of ZAR50million (US\$2.8 million)
 - ~ US\$ 1.33 /Resource oz

DFS results announced on Mintails Mogale Gold TSFs in 2022

- Expected to add ~50koz/year over a 13-year LOM, increasing Group production by ~25% per annum
- At US\$1,750/oz# (ZAR872,000/kg): Pre-tax NPV (9.5%) of US\$65m, real ungeared IRR of 20.1%
- At US\$1,906/oz# (ZAR950,000/kg): Pre-tax NPV (9.5%) of US\$88m, real ungeared IRR of 23.0%
- Forecast AISC of ~US\$914/oz over initial 13-year LOM

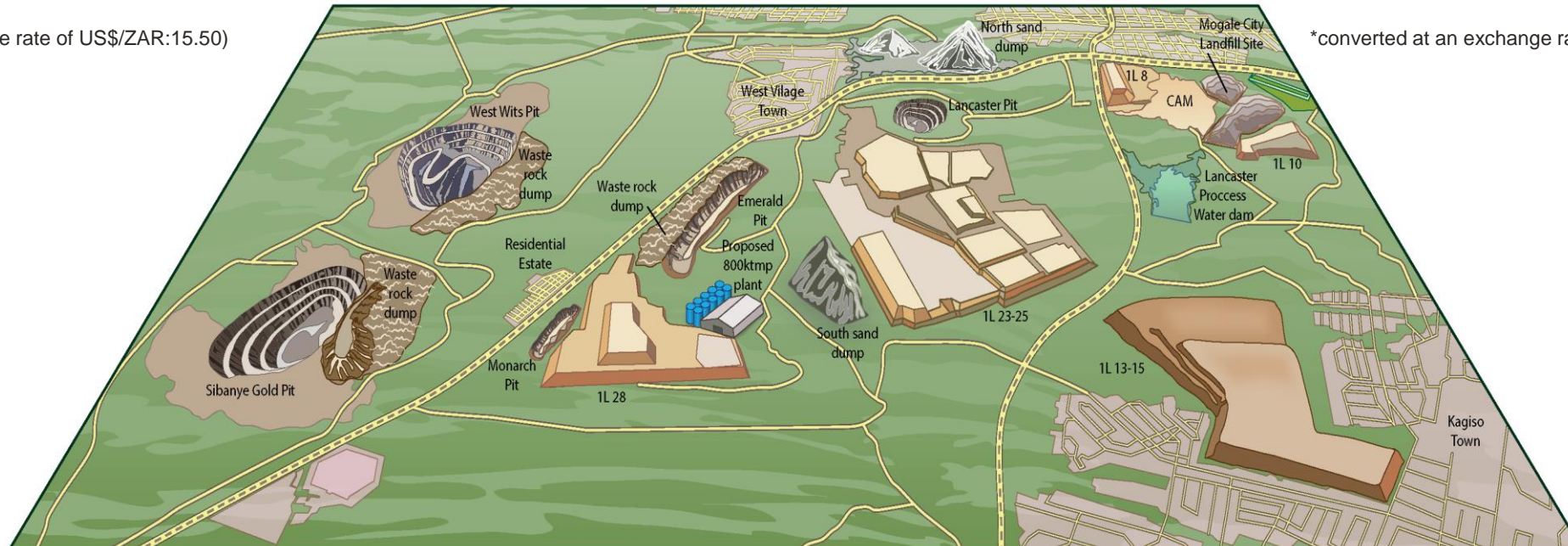
converted at an exchange rate of US\$/ZAR:15.50)

- 800ktpm processing plant design based on successful Elikhulu and BTRP operations
 - Construction capex of ZAR2,5 billion (US\$135.1million*) – payback within 3.5 years post commissioning
 - Optimisation and value engineering activities complete

Steady state production expected by December 2024

- Study progressing on the Mintails SA Soweto Cluster TSFs
 - Further annual production upside – concept engineering work underway
 - Mineral Resource estimation complete – TSFs upgraded to Indicated categories
 - Extends LOM from 13 years to 21 years

*converted at an exchange rate of US\$/ZAR:18.50)



PERFORMANCE BY OPERATION

MOGALE TAILINGS RETREATMENT PLANT CONSTRUCTION IN PROGRESS – TIMELINE TO COMMISSIONING

PROPOSED PROJECT EXECUTION TIMELINE

ACTIVITY

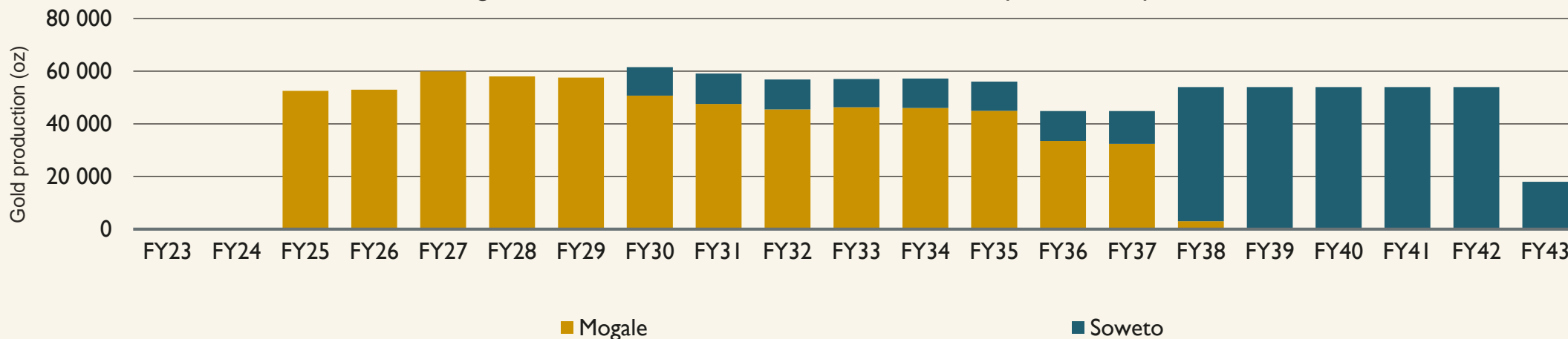
- Completion and finalisation of DFS
- Engineering optimisation activities
- Detailed engineering optimisation
- Funding package finalised
- Environmental approvals for construction
- Construction commenced
- Expected commissioning

ESTIMATED DATE

- Completed ✓
- Completed ✓
- Completed ✓
- July 2023 ✓
- June-July 2023 ✓
- July 2023 ✓
- Dec 2024



Mogale and Soweto Cluster TSFs – indicative production profile



PERFORMANCE BY OPERATION

MOGALE SOCIO-ECONOMIC DEVELOPMENT AND ENVIRONMENTAL REHABILITATION

History

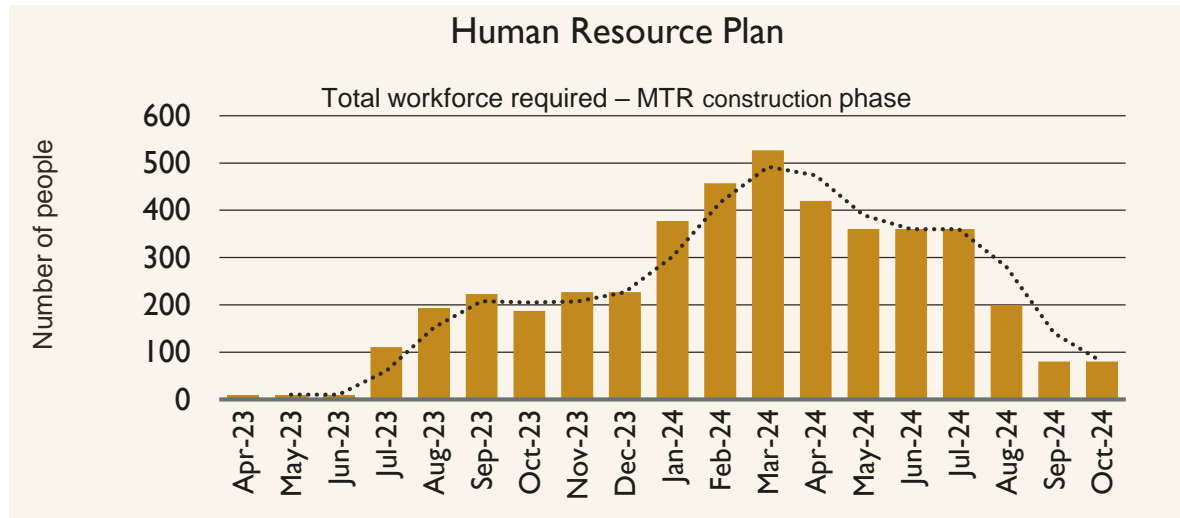
>100 years of underground mining in the West Rand region of the Witwatersrand Goldfield

- Production of over 2,000 tons of gold and 240 Mt of low-grade gold-bearing tailings material in numerous TSFs
- Underground shafts left exposed – accessed by illegal miners
 - poses a threat to local communities and environment

Pan African’s positive impact

Transparent engagement with all local stakeholders – social licence to operate secure

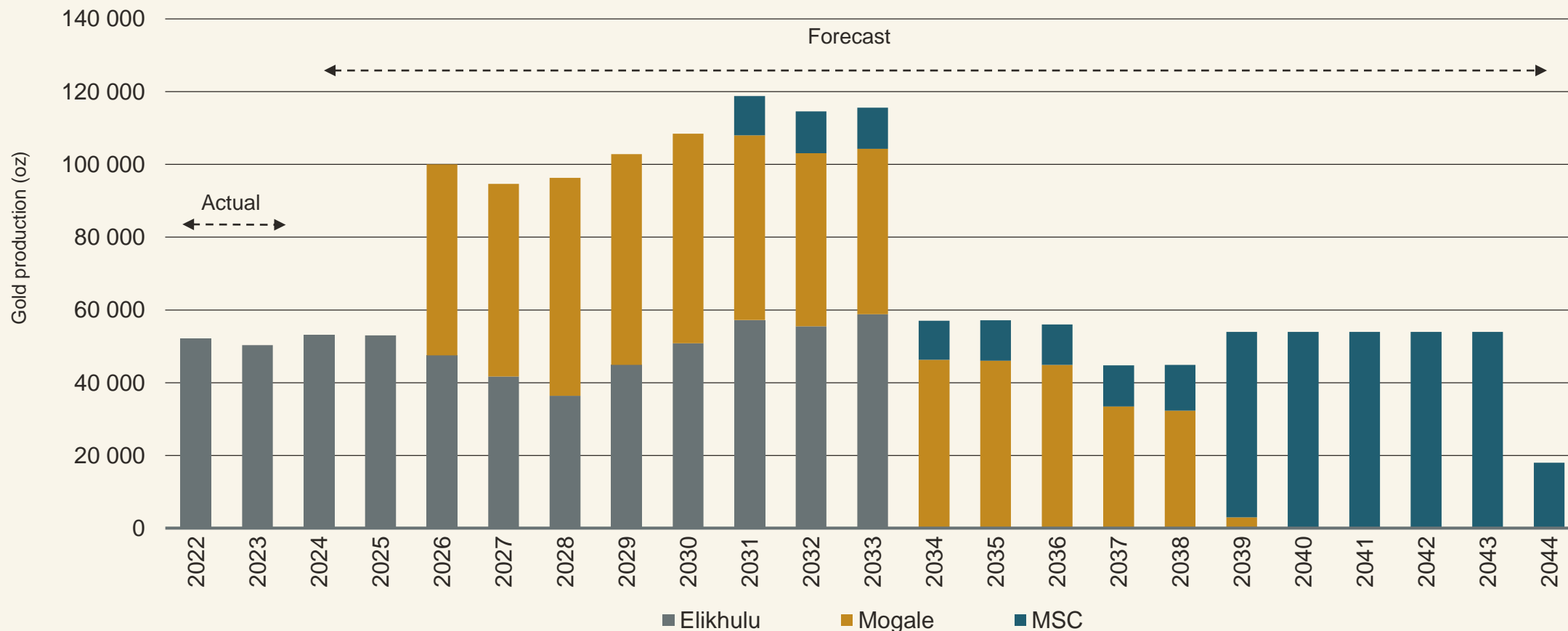
- >20-year operational life will revive the local economy, create jobs, assist with community sustainability and improve security
- Concurrent rehabilitation will improve air and water quality, reduce illegal mining opportunities



PERFORMANCE BY OPERATION

BUILDING A WORLD CLASS SURFACE TAILINGS RETREATMENT BUSINESS

Elikhulu and Mintails production profile



PERFORMANCE BY OPERATION

EVANDER UNDERGROUND

EVANDER 8 SHAFT

- Production ▲ 11.1% to 21,307oz in H1 FY24 (H1 FY23: 19,173oz)
- Tons milled ▲ 16% to 89,7Kt u/g tons milled at 7.4g/t (H1 FY23: 73,9Kt at 8.1g/t)
- AISC of US\$1,228/oz (H1 FY23: US\$1,052/oz) – increase due to 16% decrease in costs capitalised to the 24-26 Level Project
- Over 80% of production from 24 Level mining activities
 - Successfully replacing tonnage from 8 Shaft Pillar mining

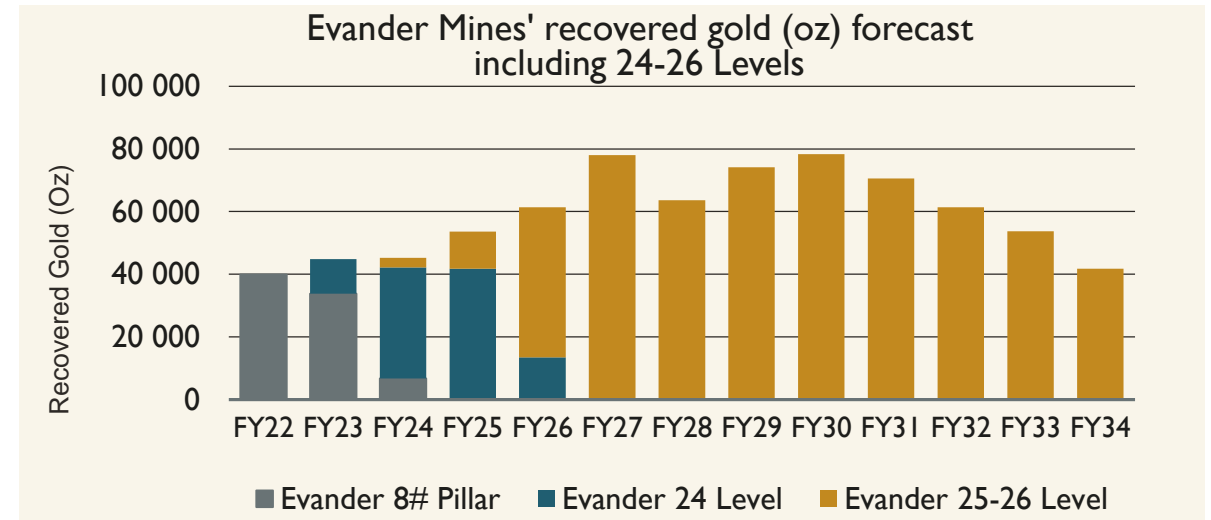
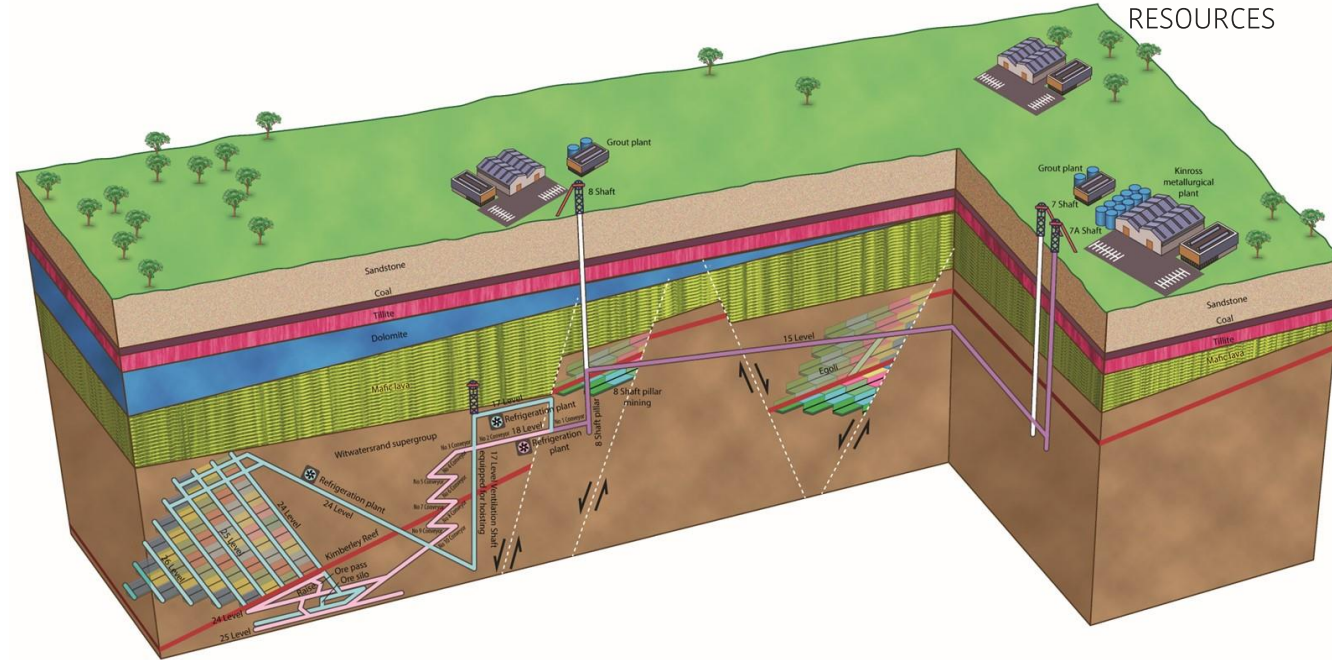
EVANDER 24 – 26 LEVEL PROJECT DEVELOPMENT ON TRACK

Extends 8 Shaft LOM and adds gold production for ~11 years

- Phase 2 of refrigeration plant at 24 Level on track for commissioning in FY24 – allows more efficient mining at depth
- Development of 25 Level mining areas to be complete in FY26 – u/g production will increase to >65koz/yr
- Existing ventilation shaft to be equipped for hoisting 40ktpm from 17-24 Level
 - to be completed during FY24
 - eliminates kilometres of ageing existing u/g conveyor belts, simplifies ore handling and improves efficiencies

EGOLI PROJECT - PHASED APPROACH

- Dewatering of 3 Decline infrastructure to 20 Level achieved
 - Permanent pumping infrastructure then installed for drilling platforms to improve Reserve delineation
- Mining commenced with three crews in remnant areas on 15 and 16 Levels
- LOM ~9 years



PERFORMANCE BY OPERATION

EVANDER GOLD MINE – SIGNIFICANT CAPITAL INVESTMENT FOR LONG-TERM SUSTAINABILITY



Underground refrigeration plant

- Phase 1 of refrigeration plant at 24 Level – commissioned in October 2023
 - Enables mining operations on both the 24 Level raise line stopes and in the development ends
- Phase 2 on track for commissioning in FY2024
 - Will service 24-25 Levels



Equipping of vent shaft at 17 Level

- Capacity of 40,000tpm
- Reduce ore handling to 10 transfer points in total (from 21 previously)
- Eliminates over 4km of conveyors used for underground ore transport
- Improved Mine Call Factor
- Services life of 24-26 Level operations



Grout plant constructed at 8 Shaft

- Provides pseudo-pillar material for mining support on 24 Level and future mining operations on 25 and 26 Levels
- Pseudo-pillars in the 8 Shaft pillar – effective in controlling mining subsidence and enhancing clean mining practices

Other ongoing projects include

- Locomotive and rail haulage upgrades
- New shaft steel infrastructure

PERFORMANCE BY OPERATION

EVANDER GOLD MINE – SIGNIFICANT CAPITAL INVESTMENT FOR LONG-TERM SUSTAINABILITY



Evander Solar Plant

- 9.9 MW Solar renewable energy plant – commissioned in May 2022
- Generates ~24% of Elikhulu's energy requirements – some 25,000MWh per year
- Savings of ~US\$1,3million in annual electricity costs at current tariffs, reducing Group AISC by some US\$13/oz*
- Reduction of ~24 000 t CO₂e per year
- Feasibility study to expand plant by a further 12MW
 - Extensive land available adjacent to current plant

Water Retreatment Plant

- EGM water retreatment plant was commissioned in June 2023
 - Capacity of 3ML/day
- Underground water withdrawal from # 7 and # 8 Shaft
- Uses an ultrafiltration and reverse osmosis system to treat water required for EGM
- Estimated annual savings of US\$500,000/year

*savings not included in reported AISC

PERFORMANCE BY OPERATION

FAIRVIEW MINE

Initiatives implemented to improve gold production

- Continuous operations cycle
 - Gold production ▲ 17% to 22,194oz (H1 FY23: 19,041oz)
 - Average u/g RoM volumes from MRC and Rossiter orebodies improved to an average of 10,000tpm (H1 FY23: ~8,800tpm)

Improved mining flexibility with multiple platforms

- MRC orebody: Mining on three high grade platforms (258, 259 and 260) with down-dip development towards 261 platform progressing
- Rossiter orebody – optimisation of mining methodology has improved efficiencies and reduced dilution for improved grades

Exploration delineation drilling for down-dip extensions

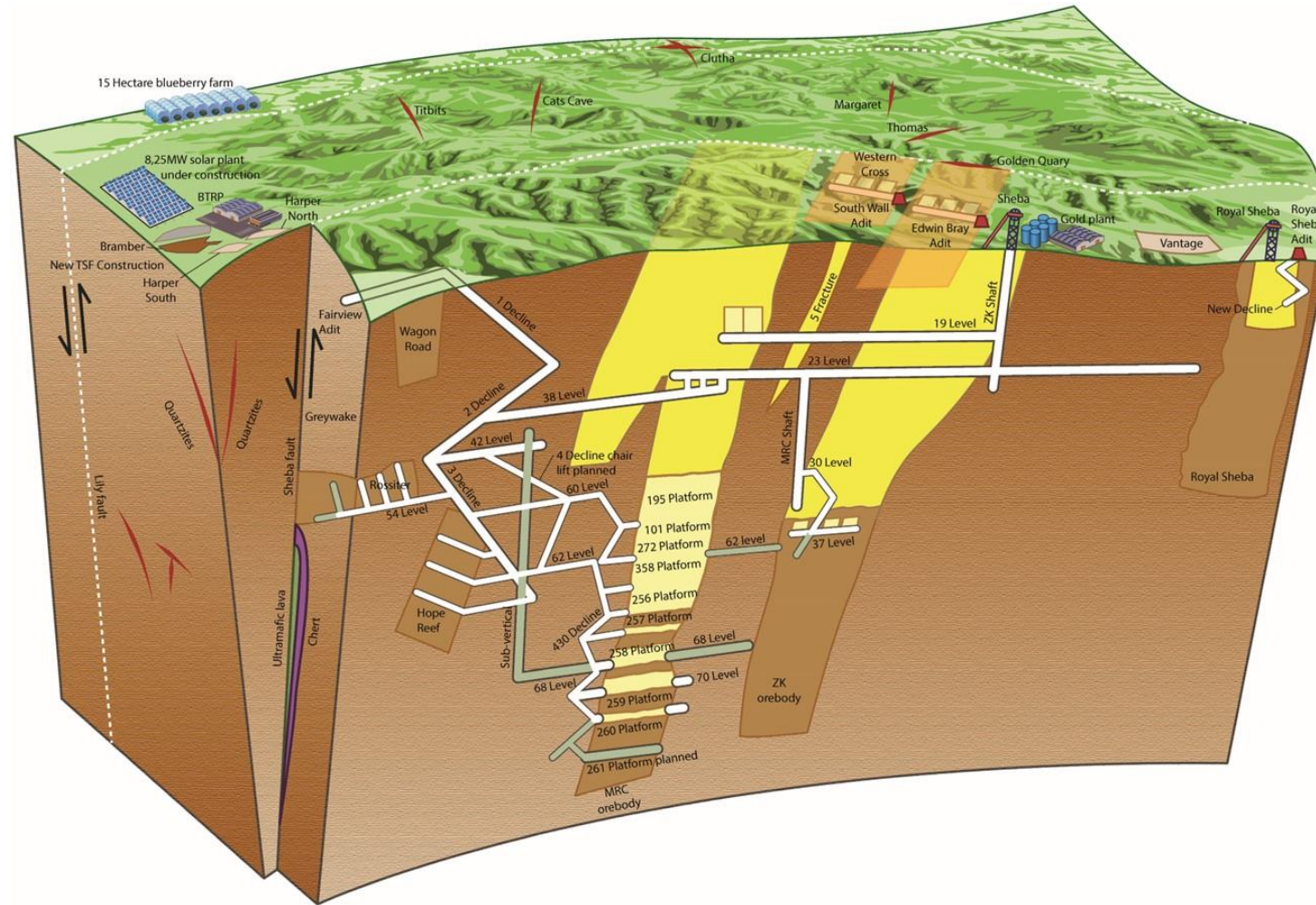
- Completed 2,226m of diamond core drilling
- Confirmed down-dip extensions of the high-grade MRC, Rossiter and Hope Reefs orebodies
- New deformation and structural model developed for the MRC orebody using modern software – additional exploration targets identified

Steady progress with logistical enhancements at 3 Decline to improve hoisting availability

- Chairlift decline to be installed between 42 and 64 Levels
- Opportunity exists to rehabilitate connected ramp infrastructure from 38 to 70 Level – for the transport of men and material to deeper mining areas

Grout backfill plant completed - enables pumping of backfill from surface, replacing bagged cement

- Infrastructure for 11 Level mining completed
- Installations in progress for grout backfill system up to MRC 260 platform



PERFORMANCE BY OPERATION

BARBERTON MINES' SMALLER UNDERGROUND OPERATIONS

SHEBA MINE

Gold production ▲ 19% to 11,139oz (H1 FY23: 9,359oz)

- Improved production is attributed to MRC orebody and three higher grade Zwartkoppie (ZK) ore blocks, as well as the South Wall adit
- Supplemented by higher grade Verster and Thomas reefs at the Edwin Bray adit

Implementation of continuous operations

- Enabled increased development for mining of higher-grade resource areas
- Allowed RoM tonnes to remain consistent at 8,661tpm (H1 FY23: 7,306tpm) despite Eskom challenges
- Mined grade improved by 2% to 6.73g/t

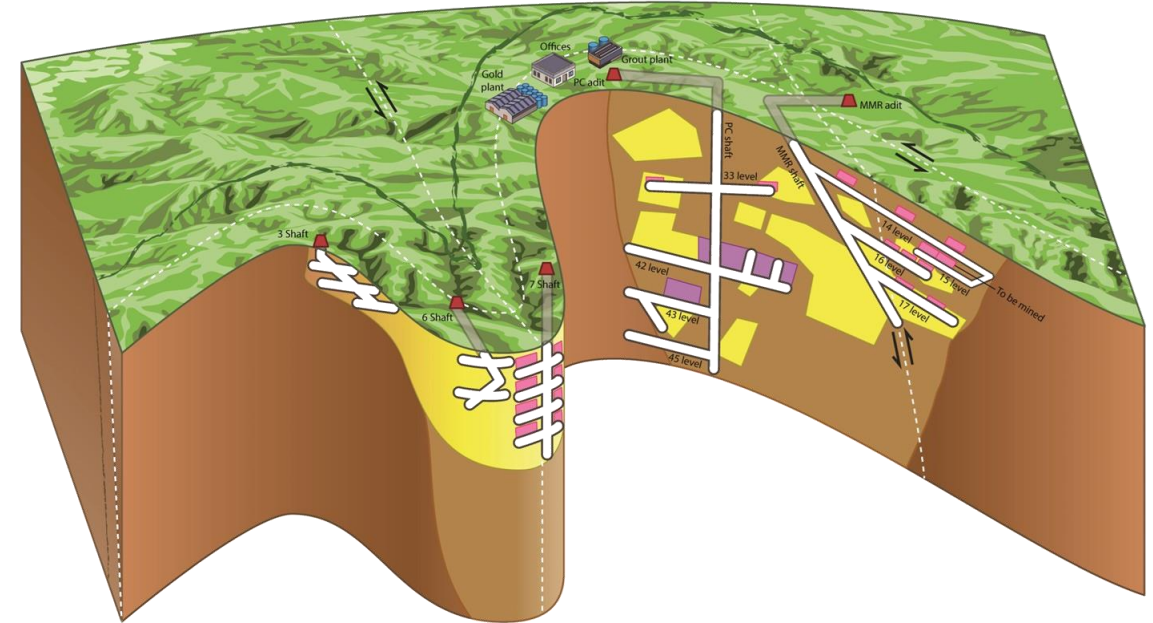
Development to increase mining flexibility

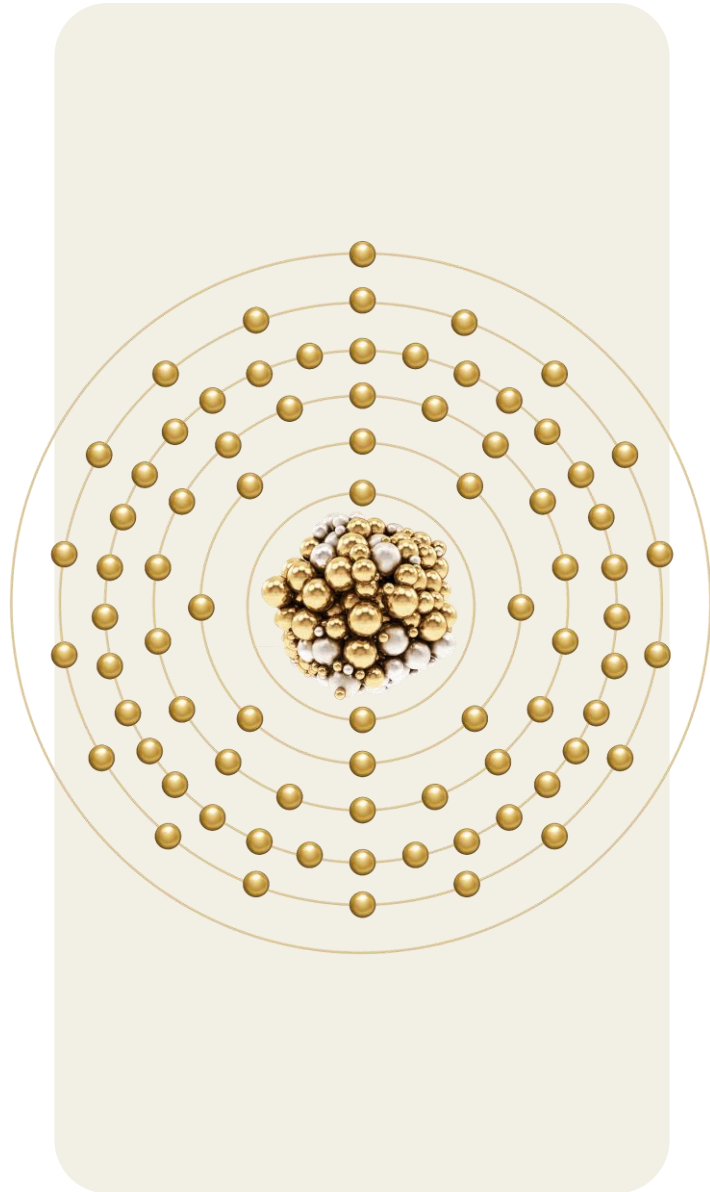
- Continuing at MRC orebody – three additional platforms established
- Mineral Reserve delineation on 37 and 38 Levels of ZK orebody for mine development – 2,370m of diamond core drilling completed in H1 FY24 (2,122m in H1 FY23)

CONSORT MINE

Current focus at Consort is to:

- Equip the PC Shaft to enable extraction of high-grade ore from the 41 to 45 Level areas
 - Geotechnical challenges on 42 and 43 Level mining areas limited ore availability and is being remediated
- Revise mine plan to access lower grade mining areas on 17 and 37 Levels – will lead to improved performance during H2 FY24
- Mineral Resource growth strategy in place
 - Diamond core exploration drilling aimed at locating resources to substitute lower grade surface sources currently supplementing plant feed
 - Completed 1,390m of core drilling (H1 FY23: 1,117m)





- 1.0 Health and safety
- 2.0 Group overview
 - 2.1 Our operating environment
 - 2.2 H1 FY2024 – Key features
 - 2.3 Performance by operation
 - 2.4 Group AISC**
 - 2.5 Capital projects (ZAR)
- 3.0 ESG: Our “Beyond compliance” approach
- 4.0 H1 FY2024 Financials
- 5.0 Exploration – Republic of the Sudan
- 6.0 FY2024 – Focused on execution
- 7.0 Appendix

OPERATIONAL OVERVIEW



GROUP AISC

H1 FY2024 – GUIDING AISC OF US\$1,325/oz – US\$1,350/oz IN FY2024*

Lower cost operations

	Evander surface sources	BTRP	Elikhulu	Evander underground	Barberton Mines' Fairview	Total lower cost operations	% Group production
AISC per kg (ZAR/kg)	1,187,909	390,830	588,435	738,070	854,008	690,644	85%
AISC per oz (US\$/oz)	1,977	650	979	1,228	1,421	1,149	

Higher cost operations – Barberton Mines' restructure in progress, Evander surface sources curtailed

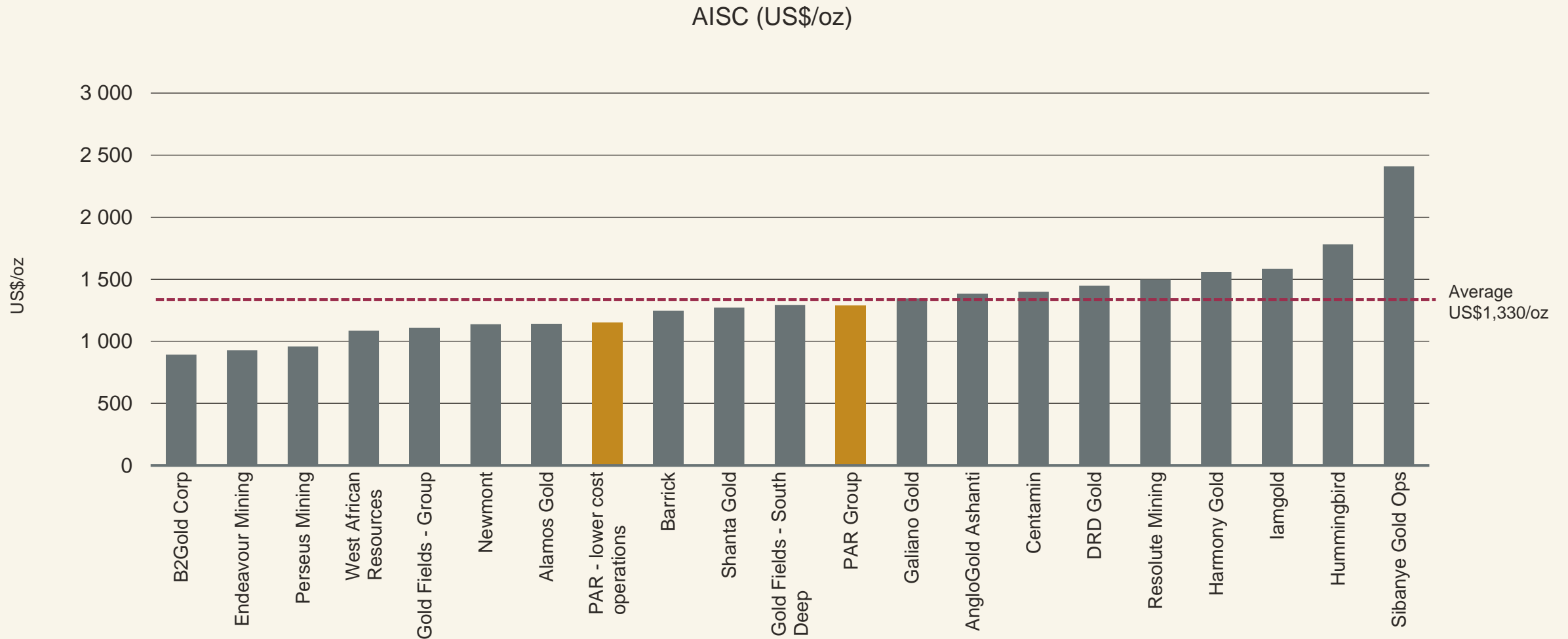
	Barberton –Sheba and Consort Mines	Total higher cost operations	% Group production
AISC per kg (ZAR/kg)	1,249,169	1,249,169	15%
AISC per oz (US\$/oz)	2,079	2,079	

*Assuming an exchange rate of US\$/ZAR:18:50

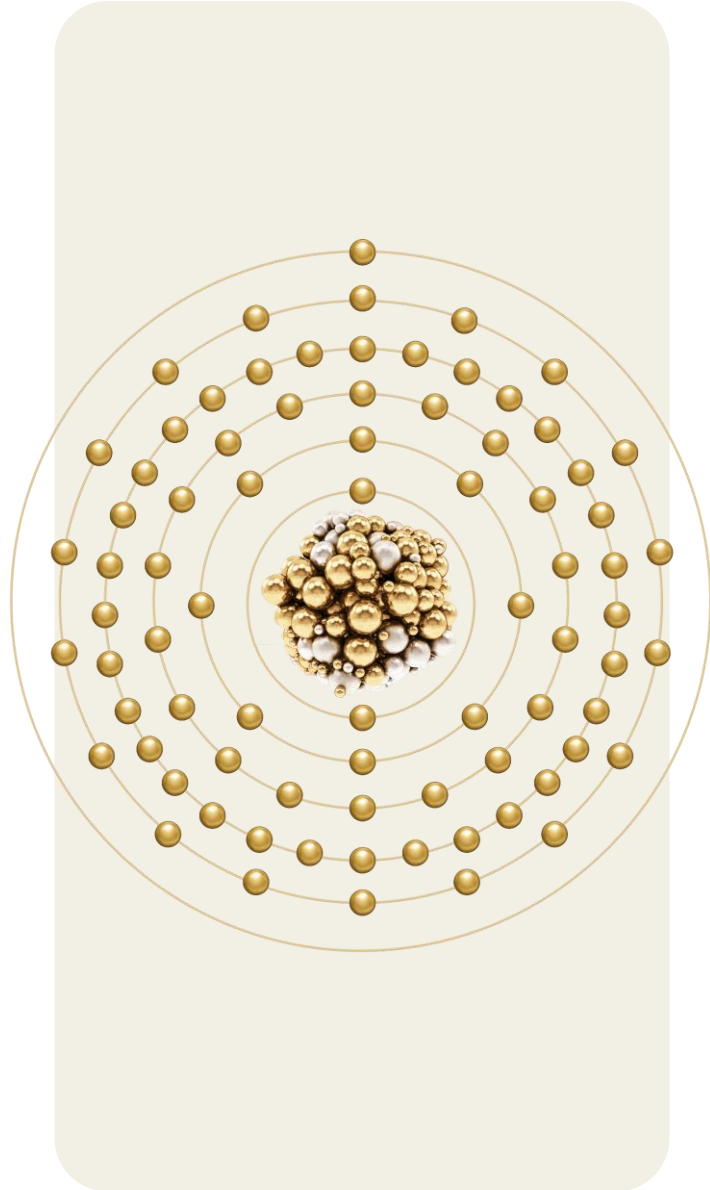
OTCQX: **PAFRF/PAFRY** | AIM: **PAF** | JSE: **PAN**

GROUP AISC

FY 2024 – AISC OUTLOOK



Source: Individual company websites and presentations



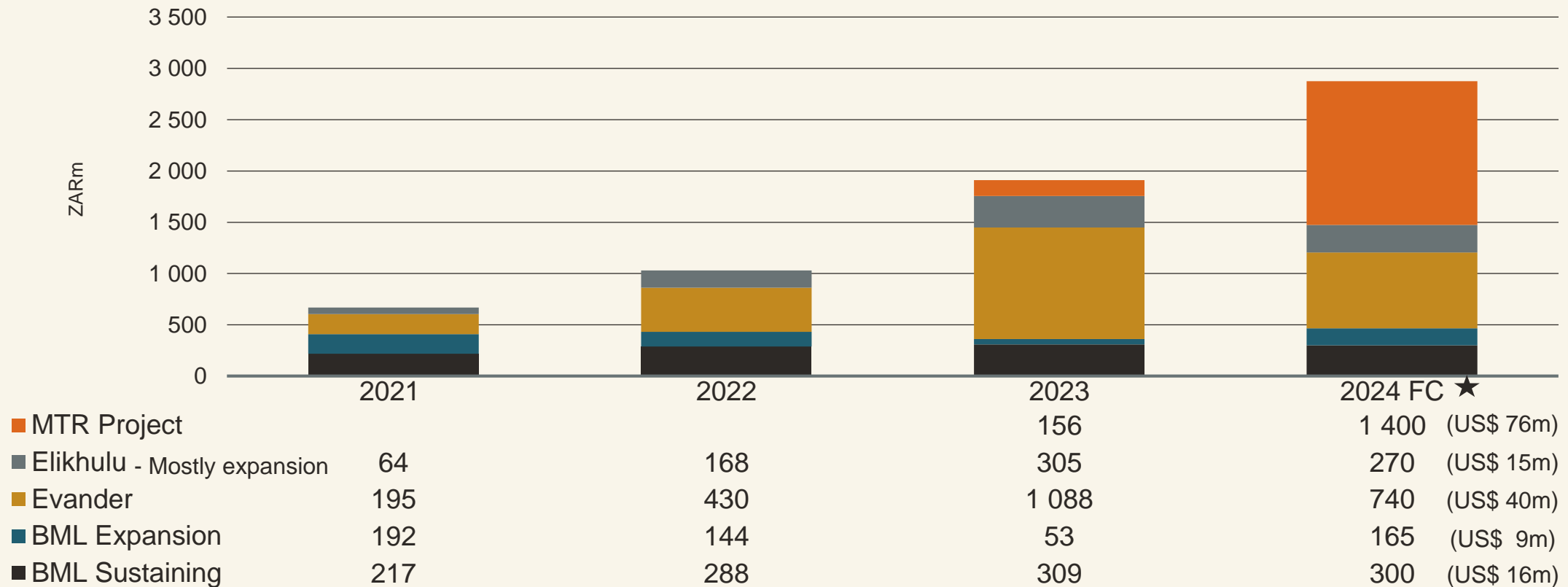
1. Health and safety
2. Group overview
 - 2.1 Our operating environment
 - 2.2 H1 FY2024 – Key features
 - 2.3 Performance by operation
 - 2.4 Group AISC
 - 2.5 Capital projects (ZAR)
3. ESG: Our “Beyond compliance” approach
4. H1 FY2024 Financials
5. Exploration – Republic of the Sudan
6. FY2024 – Focused on execution
7. Appendix

GROUP OVERVIEW

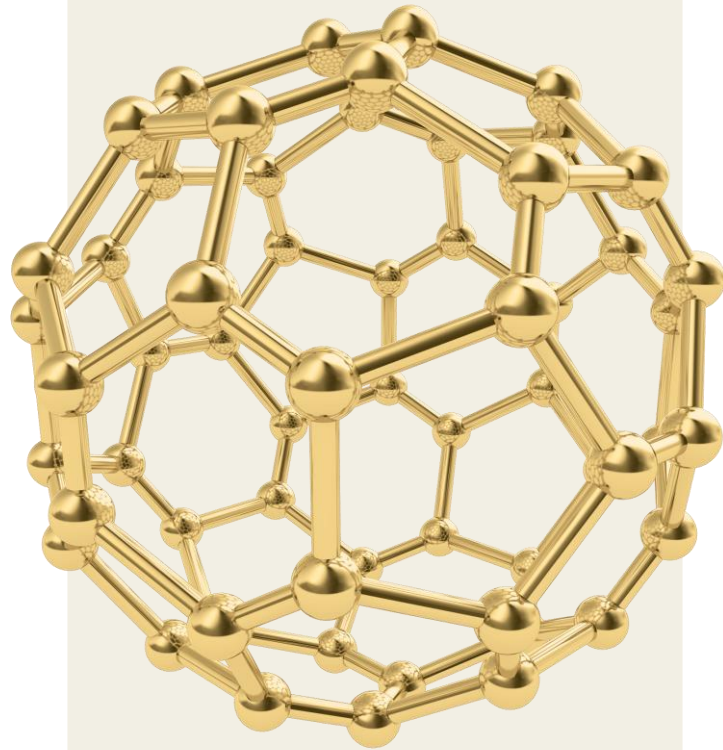


CAPITAL PROJECTS (ZAR)

INVESTMENT IN ORGANIC GROWTH AND MTR – INCREASING OUR PRODUCTION PROFILE



★ Major expansion capital items include Barberton Mines' chairlift expansion, 8 Shaft expansion capital for the 24-26 Level project, equipping costs for Evander 7# infrastructure, including steelwork and development costs, completion of phase 2 of Elikhulu TSF footprint extension, MTR project plant construction (figures rounded, converted at an average exchange rate of ZAR/US\$:18.50)




1. Health and safety
2. Group overview
 - 2.1 Our operating environment
 - 2.2 H1 FY2024 – Key features
 - 2.3 Performance by operation
 - 2.4 Group AISC
 - 2.5 Capital projects (ZAR)
3. **ESG: Our “Beyond compliance” approach**
4. H1 FY2024 Financials
5. Exploration – Republic of the Sudan
6. FY2024 – Focused on execution
7. Appendix

ESG :
OUR “BEYOND
COMPLIANCE”
APPROACH



ESG: OUR “BEYOND COMPLIANCE” APPROACH



ENVIRONMENT

WATER RECYCLING
Responsible and sustainable water use

- 3ML/day water retreatment plant at Evander Mines commissioned Feb 2023
 - Reduced municipal water use, cost savings of over US\$0.5m/yr


RENEWABLE ENERGY PROJECTS

- 8.75MW Barberton solar plant under construction – to be commissioned in June 2024

BIODIVERSITY & CONSERVATION
To preserve biodiversity and resources

- Promote coexistence of conservation and mining
- Funding the care of orphaned rhinos
- Rehabilitation of historic mine workings





SOCIAL

STAKEHOLDER ENGAGEMENT

- Engagement forums with communities and local government at each operation
- Clear and transparent communication and action reduces operational disruptions

SOCIO-ECONOMIC DEVELOPMENT

- Integral to our social licence to operate
- SLP compliance up to date at all operations – significant local community benefits
 - New school buildings in Barberton handed over in November 2023 – benefits over 1,600 students annually
 - Newly built and fully equipped maths and science laboratories at Evander benefits over 1,200 learners annually
- Beyond compliance community education and local small business development initiatives





SOCIAL

SUSTAINABLE COMMUNITIES
Barberton Blueberries farm

- Job creation and skills development for over 200 local community members
- Salaries of over US\$0,2m paid in H1 FY24 – stimulates local economy
- ‘Beyond compliance’ long-term initiative for local community self-sustainability

SKILLS DEVELOPMENT & CSI
Communities benefit by skills development required for PAR operations

- Includes bursaries, learnerships and training
- Local supplier development
- CSI – NGOs in host communities – social support and sustainable initiatives





GOVERNANCE AND COMPLIANCE

FULLY COMPLIANT WITH GRI REPORTING
 Third ESG Report for Group published –

- Independent assurance by PwC on key sustainability information
- Includes TCFD reporting guidelines

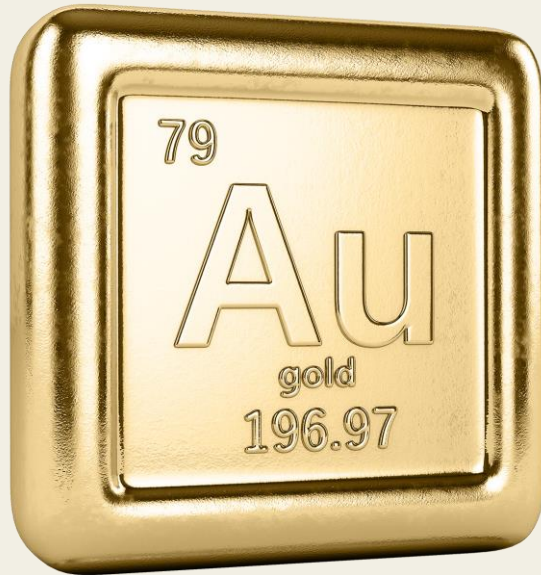
Chartered Governance Institute of Southern Africa

- Group won the Integrated Reporting Excellence Award in the JSE Limited Small Cap category
- Recognises the Group’s commitment to transparent and comprehensive reporting

Closure liabilities fully funded
Ongoing rehabilitation programmes

Working to comply with latest international TSF standards as per GISTM requirements





1. Health and safety
2. Group overview
 - 2.1 Our operating environment
 - 2.2 H1 FY2024 – Key features
 - 2.3 Performance by operation
 - 2.4 Group AISC
 - 2.5 Capital projects (ZAR)
3. ESG: Our “Beyond compliance” approach
4. **H1 FY2024 Financials**
5. Exploration – Republic of the Sudan
6. FY2024 – Focused on execution
7. Appendix

H1FY 2024 FINANCIALS

A resilient financial performance

H1 FY2024 FINANCIALS

SUMMARISED CONSOLIDATED FINANCIAL RESULTS

Salient features	Units	Six months ended 31 December 2023	Six months ended 31 December 2022	Movement %
Gold produced¹	oz	98,458	92,307	6.7
Gold sold	oz	98,458	90,439	8.9
Revenue	US\$ million	193.9	156.5	23.9
	US\$/oz	1,961	1,725	13.7
Average gold price received	ZAR/kg	1,178,433	960,947	22.6
AISC^{APM, 2}	US\$/oz	1,287	1,291	0.3
Adjusted EBITDA^{APM, 3}	US\$ million	75.2	53.3	41.1
Attributable earnings	US\$ million	42.6	29.1	46.4
Headline earnings^{APM}	US\$ million	42.6	29.1	46.4
EPS	US cents	2.22	1.52	46.1
HEPS^{APM}	US cents	2.22	1.52	46.1
Net cash from operating activities	US\$ million	27.2	11.6	134.5
Net debt^{APM}	US\$ million	64.3	53.7	(19.7)

Note 1: Gold produced in the previous reporting period included 1,418oz produced but not sold at period-end and 450oz gold equivalent platinum group metals ounces produced by Evander Mines' osmiridium circuit.

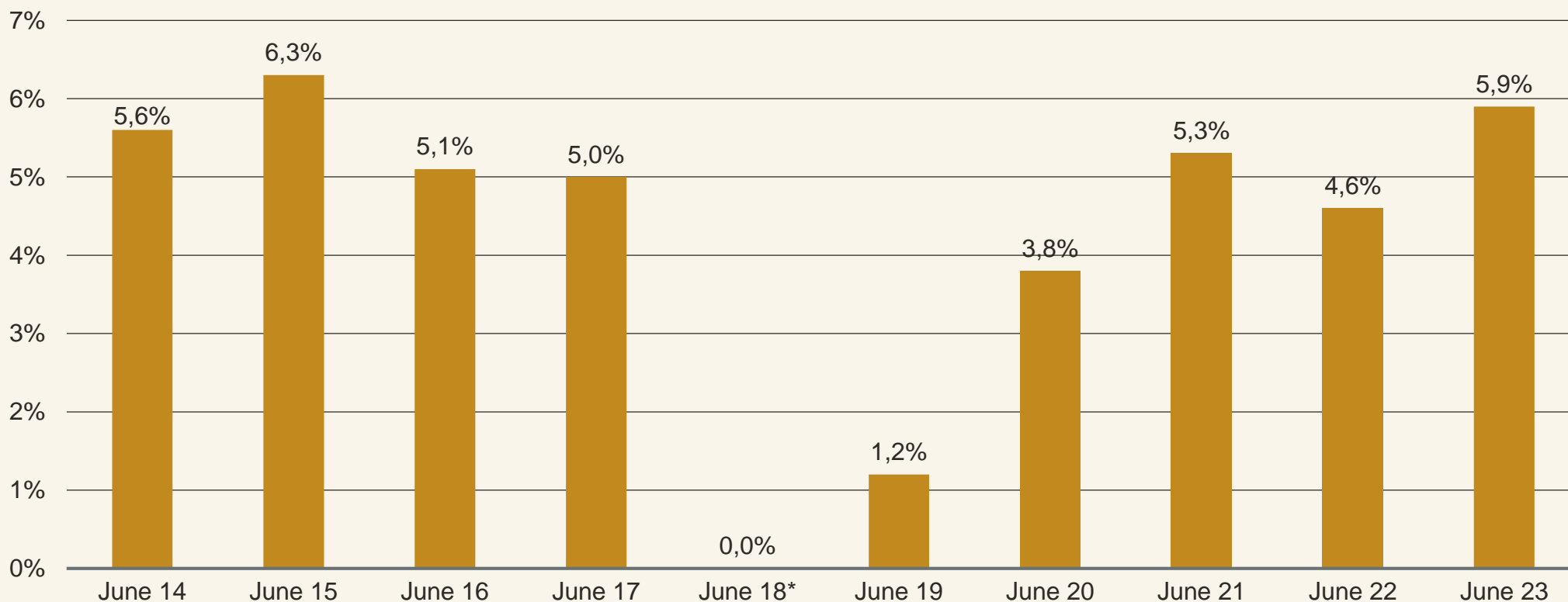
Note 2: The AISC per kilogramme and AICAPM per kilogramme include realised derivative mark-to-market fair value gains/losses and exclude unrealised derivative mark-to-market fair value gains/losses relating to the current gold mining operations. Refer to the alternative performance measures (APM) summary report for the reconciliation of cost of production to AISC and AIC, as calculated in accordance with International Financial Reporting Standards (IFRS).

Note 3: Adjusted EBITDA comprises earnings before interest, tax, depreciation and amortisation and impairment.

H1 FY2024 FINANCIALS

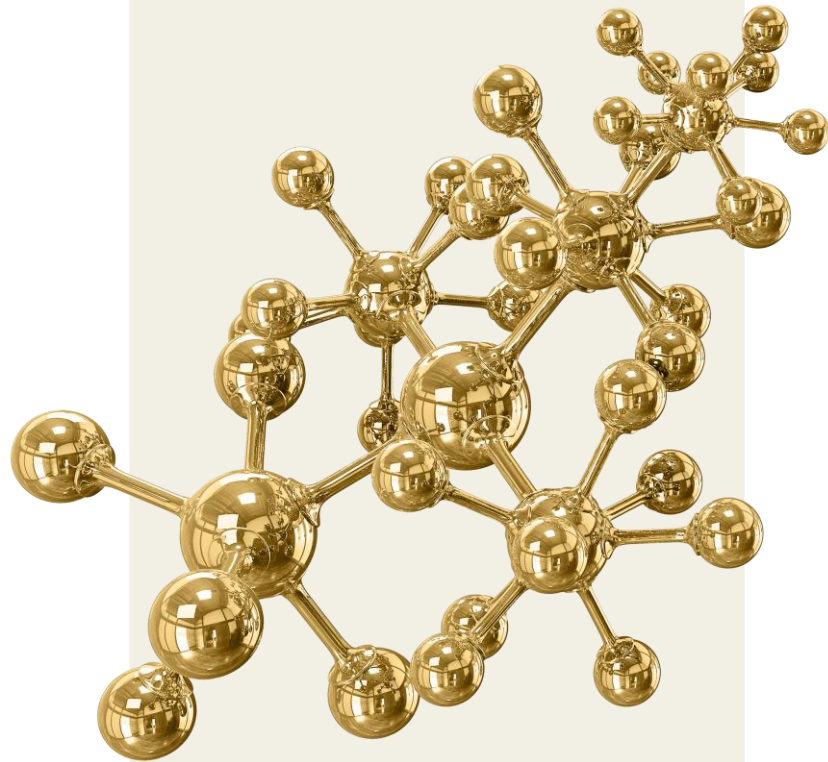
DIVIDENDS AND SHAREHOLDER RETURNS

Historic dividend yield – record of returning cash to shareholders



* Dividend suspended due to cessation of large-scale deep level underground mining at Evander 8 Shaft and construction of the Elikhulu Tailings Retreatment Plant

Calculated at the JSE closing share price of ZAR3,03 on 30 June 2023



1. Health and safety
2. Group overview
 - 2.1 Our operating environment
 - 2.2 H1 FY2024 – Key features
 - 2.3 Performance by operation
 - 2.4 Group AISC
 - 2.5 Capital projects (ZAR)
3. ESG: Our “Beyond compliance” approach
4. H1 FY2024 Financials
5. **Exploration – Republic of the Sudan**
6. FY2024 – Focused on execution
7. Appendix

EXPLORATION – REPUBLIC OF THE SUDAN



EXPLORATION – REPUBLIC OF THE SUDAN



WHY SUDAN?

Third largest gold producer in Africa (after Ghana and SA) and 10th in the world (2021)

- Production of ~90 tonnes of gold in 2021
- History of artisanal mining and toll treatment
- Sparsely populated area – limited relocation of communities

Diversification opportunity for the Group

- Early mover advantage
 - US\$155m acquisition of Orca Gold by Perseus Mining
- Exploration rights to five highly prospective areas over 1,100km², valid for 3 years from March 2022, option to renew for 2 years
 - Mining leases valid for 25 years, renewable for 20 years
 - State has a 30% free carried interest in venture

Licence areas in Nakasib Suture Zone, Arabian-Nubian Shield – >5,000year history of gold mining

- Host to Hassai Mine – Sudan’s largest gold mine
- Mineralisation includes alluvial/placer gold, orogenic gold and VMS type – targets amenable to open cast - shallow underground mining
- Initial grab samples averaged 13.6g/t, highest grade in quartz veins sampled at 145g/t



PROGRESS IN FY2024

Exploration activities resumed in Q1 FY24, following a detailed risk assessment of the in-country operating environment

In H1 FY24, work focused on stream sediment sampling, soil sampling and trench sampling in the following target areas:

Block 12A North – Kishi target (area of 2km by 750m)

- 296 drainage, 394 soil and 41 surface channel samples
- Sample grades of up to 97,270ppm copper (or 9.7%), 0.5g/t gold, 208ppm cobalt and 4.4% nickel
- An anomalous volcanogenic massive sulphide (VMS) type copper and gold target that requires further investigation

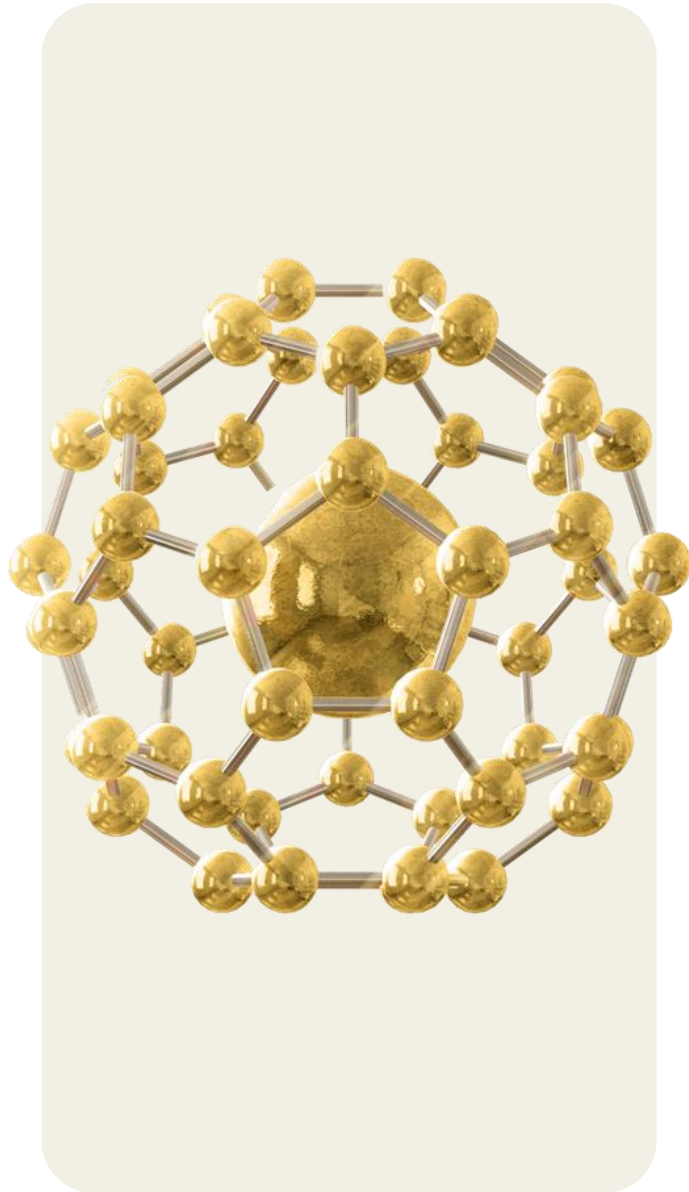
Block 12A North – Turkish Ridge target (area of 500m by 250m)

- Comprised 113 grid drainage and soil samples
- Sample grades of up to 7.3g/t gold and 180ppm copper

Block 12A South – Sataib target

- Mainly stream sediment and soil samples, 46 trench samples across mineralised veins
- Active artisanal mining – focused on narrow high-grade veins extending over 1km on strike
 - Multiple sub-parallel veins over a zone > 300m wide
 - Sample values of up to 22.8g/t gold

In September 2022, the Group commissioned the first commercial fire assay multi-element analytical laboratory in Sudan for quick turnaround of its exploration sample assay results



1. Health and safety
2. Group overview
 - 2.1 Our operating environment
 - 2.2 H1 FY2024 – Key features
 - 2.3 Performance by operation
 - 2.4 Group AISC
 - 2.5 Capital projects (ZAR)
3. ESG: Our “Beyond compliance” approach
4. H1 FY2024 Financials
5. Exploration – Republic of the Sudan
6. **FY2024 – Focused on execution**
7. Appendix

FOCUSED ON EXECUTION

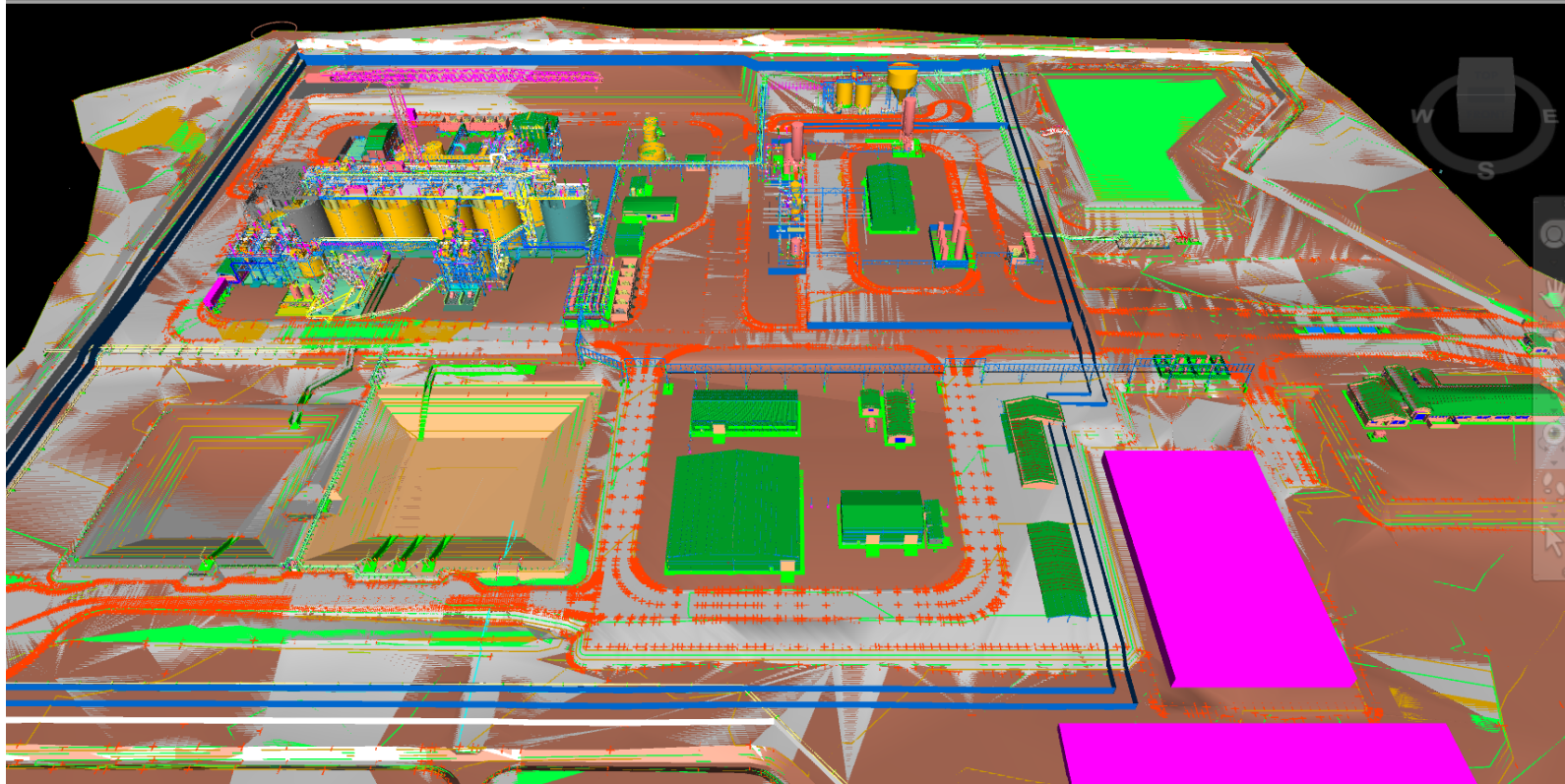


FY2024: FOCUSED ON EXECUTION

KEY DELIVERABLES INCLUDE

- Continue with **focus on health and safety initiatives** in our proactive journey to ‘zero harm’
- Monitor the Group’s **optimisation and improvement initiatives** intended to increase production and reduce costs
- Successfully execute capital projects designed to sustain **and increase future gold production profile** to approximately 250,000oz/year
- Progress ESG initiatives with a focus on **maintaining our social licence** to operate
- Advance our **renewable energy roadmap** as part of the decarbonisation strategy
- Maintain focus on generating **sustainable shareholder returns**

Schematic of MTR processing plant





Thank you

Contact: Hethen Hira,
Head of investor relations
Email: Hhira@paf.co.za
www.panafricanresources.com



1. Health and safety
2. Group overview
 - 2.1 Our operating environment
 - 2.2 H1 FY2024 – Key features
 - 2.3 Performance by operation
 - 2.4 Group AISC
 - 2.5 Capital projects (ZAR)
3. ESG: Our “Beyond compliance” approach
4. H1 FY2024 Financials
5. Exploration – Republic of the Sudan
6. FY2024 – Focused on execution
7. Appendix

APPENDIX



COMPANY SNAPSHOT

As at 2 February, 2024

JSE (PAN)	ZAR434cps
AIM (PAF)	GBP17.7p
ADR (PAFRY) 20:1	US\$4.68
OTC (PAFRF)	US\$0.23
Market capitalisation	US\$510m
Shares issued	2,223m
Treasury shares	306m
Shares trading in market	1,917m
Free float	86%

Major institutional shareholders

Allan Gray IM (SA)	18%
M&G Investments (SA)	6%
PIC (SA)	5%
Premier Miton (UK)	5%
Ninety One (SA)	4%

Analyst coverage	Institution	Target price
Raj Ray	BMO Capital Markets	GBp25
Richard Hatch	Berenberg	GBp25
Charles Gibson	Edison	GBp27-35
Peter Mallin-Jones	Peel Hunt	GBp20
Arnold Van Graan	Nedbank CIB	ZAR4.70
Herbert Kharive	Investec	ZAR5.20
Jared Hoover	RMB MorganStanley	n/a

Corporate Information

CORPORATE OFFICE

The Firs Building
2nd Floor, Office 204
Corner Cradock and Biermann Avenues
Rosebank, Johannesburg
South Africa
Office: +27 (0) 11 243 2900

REGISTERED OFFICE

107 Cheapside, 2nd Floor
London EC2V 6DN
United Kingdom
Office: +44 (0) 20 7796 8644

CHIEF EXECUTIVE OFFICER

Cobus Loots

Office: +27 (0) 11 243 2900

FINANCIAL DIRECTOR AND DEBT OFFICER

Deon Louw

Office: +27 (0) 11 243 2900

HEAD INVESTOR RELATIONS

Hethen Hira

Office: +27 (0) 11 243 2900

COMPANY SECRETARY

Jane Kirton
St James's Corporate Services Limited
Office: +44 (0) 20 7796 8644

JSE SPONSOR

Ciska Kloppers
Questco Corporate Advisory Pty Limited
Office: +27 (0) 11 011 9200

JOINT BROKERS

Ross Allister/David Mckeown
Peel Hunt LLP
Office: +44 (0) 20 7418 8900

Thomas Rider/Nick Macann
BMO Capital Markets Limited
Office: +44 (0) 20 7236 1010

Matthew Armit/Jennifer Lee
Joh. Berenberg, Gossler & Co (Berenberg)
Office: +44 (0) 20 3207 7800

Board and Executives



KEITH SPENCER

- Chairman
- Appointed: 8 October 2007



COBUS LOOTS

- Chief executive officer
- Appointed: 26 August 2009



DEON LOUW

- Financial director
- Appointed: 1 March 2015



DAWN EARP

- Non-executive director
- Appointed: 21 September 2021



THABO MOSOLOLI

- Non-executive director
- Appointed: 9 December 2013



CHARLES NEEDHAM

- Non-executive director
- Appointed: 17 July 2019

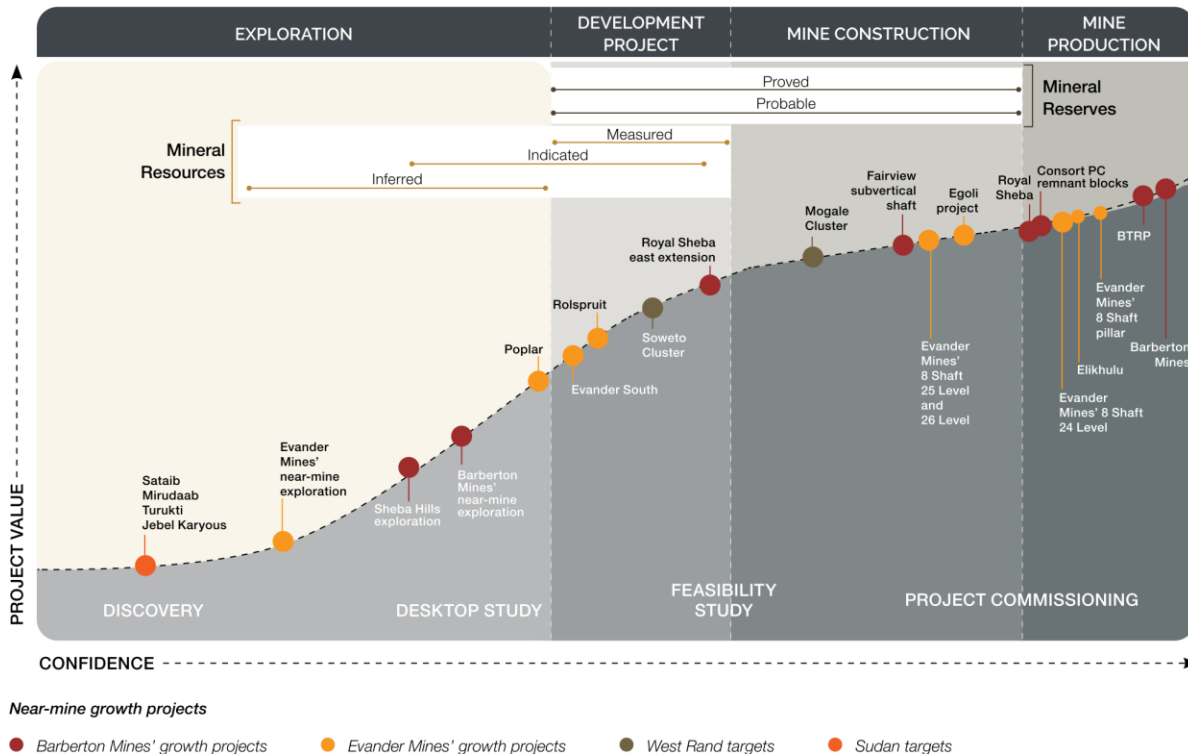


YVONNE THEMBA

- Non-executive director
- Appointed: 17 July 2019

RESERVES AND RESOURCES

GROWTH PORTFOLIO – ROBUST PROJECT PIPELINE



Gold Mineral Resources*	Tonnes Mt	Grade g/t	Gold t	Gold Moz
Barberton hard rock	24.5	4.2	102.1	3.3
BTRP	22.3	1.2	26.0	0.8
Evander underground	111.1	9.1	1 009.0	32.4
Elikhulu	163.4	0.3	44.2	1.4
Elikhulu	259.8	0.3	78.5	2.5
TOTAL	581.0	2.2	1 259.8	40.5

Gold Mineral Resources*	Tonnes Mt	Grade g/t	Gold t	Gold Moz
Barberton hard rock	5.5	6.5	35.6	1.1
BTRP	6.1	1.6	9.6	0.4
Evander underground	30.3	8.2	247.7	8.0
Elikhulu	159.3	0.3	38.6	1.2
MTR	227.7	0.3	64.6	2.1
TOTAL	408.3	0.9	398.4	12.8

*Refer to PAR FY2023 MRMR Report for disclosures

ESG: OUR “BEYOND COMPLIANCE” APPROACH

OUR COMMITMENT TO SUSTAINABLE DEVELOPMENT – WE HAVE IDENTIFIED 14 UN SDGS TOWARDS WHICH WE CAN HAVE THE MOST MEANINGFUL IMPACT

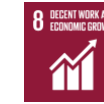


The UN SDGs comprise 17 interlinked objectives for peace and prosperity for people and the planet now and into the future. The SDGs emphasise the interconnected environmental, social and economic aspects of sustainable development by putting sustainability at their centre. The SDGs were formulated in 2015 by the UN General Assembly and adopted in a resolution called the 2030 Agenda as most targets are to be achieved by 2030.



FINANCIAL CAPITAL

Equity, debt and surplus cash from our operating activities



MANUFACTURED CAPITAL

Infrastructure, orebodies and tailings retreatment operations at Barberton Mines, Evander Mines and the MTR project



INTELLECTUAL CAPITAL

More than 130 years of mining the unique Barberton Greenstone Belt orebodies and an established track record in surface tailings re-mining



HUMAN CAPITAL

Employees and contractors who are knowledgeable, competent and adequately skilled, supported by a robust safety culture in pursuit of a zero-harm working environment



SOCIAL AND RELATIONSHIP CAPITAL

The quality of our stakeholder relationships, the initiatives we have implemented to improve the well-being of our employees and host communities and our commitment to regulatory compliance and responsible business practices



NATURAL CAPITAL

The responsible use of fuel, energy, water, air and land resources while aspiring to do minimal harm to the environment

